

Low breaking capacity moulded case circuit breakers

Advantages of low breaking capacity MCCBs

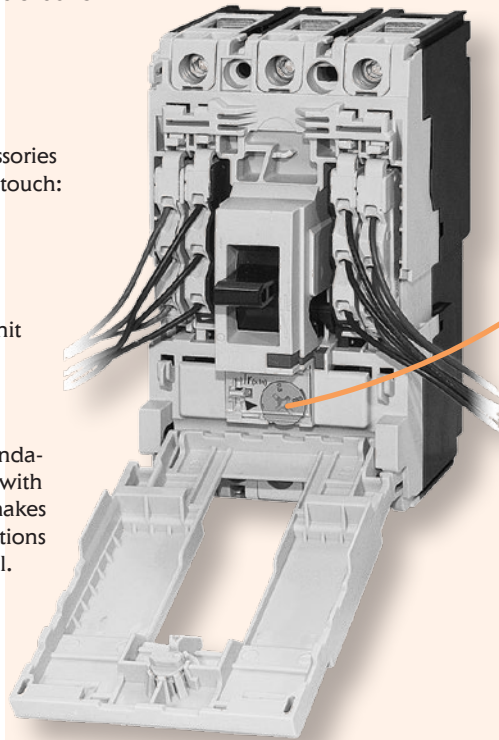
→ New series EB2S of MCCBs has excellent performances with reduced dimensions and new modern design.

→ Unique accessory cover opens with only one screw.

→ Practical internal accessories can be installed with one touch:

- auxiliary switch
- alarm switch
- shunt trip unit
- undervoltage trip unit

→ EB2S series complies to safety recommendation standard IEC 60204-1. EB2S is marked with IEC symbol "direct opening action". This makes these devices also ideal for all OEM applications where safety and reliability are essential.



→ Customer can select between fixed and adjustable protection:

- Frame size 160A: fixed (series LF, SF & HF) or thermal trip adjustable (series LA, SA & HA)
- Frame size 250A: fixed (series LF, SF & HF) or thermal-magnetic trip adjustable (series LA, SA & HA)

Legend: L -> economic, lower short-circuit breaking capacity
 S -> standard short-circuit breaking capacity
 H -> high short-circuit breaking capacity

EB2S 160 fixed protection

Type	I_n (A)	Code No.	Poles	I_{cu} / I_{cs} 400V [kA]	Adjustment thermal/magnetic	Weight [kg]	Packaging [pcs]
EB2S 160/3LF 16A 3p	16	004671801	3	16/8	fixed/fixe	0,80	1
EB2S 160/3LF 20A 3p	20	004671802					
EB2S 160/3LF 25A 3p	25	004671803					
EB2S 160/3LF 32A 3p	32	004671804					
EB2S 160/3LF 40A 3p	40	004671805					
EB2S 160/3LF 50A 3p	50	004671806					
EB2S 160/3LF 63A 3p	63	004671807					
EB2S 160/3LF 80A 3p	80	004671808					
EB2S 160/3LF 100A 3p	100	004671809					
EB2S 160/3LF 125A 3p	125	004671810					
EB2S 160/4LF 16A 4p	16	004671814	4	16/8	fixed/fixe	1,00	
EB2S 160/4LF 20A 4p	20	004671815					
EB2S 160/4LF 25A 4p	25	004671816					
EB2S 160/4LF 32A 4p	32	004671817					
EB2S 160/4LF 40A 4p	40	004671818					
EB2S 160/4LF 50A 4p	50	004671819					
EB2S 160/4LF 63A 4p	63	004671820					
EB2S 160/4LF 80A 4p	80	004671821					
EB2S 160/4LF 100A 4p	100	004671822					
EB2S 160/4LF 125A 4p	125	004671823					
EB2S 160/4LF 160A 4p	160	004671824					

Low breaking capacity moulded case circuit breakers

EB2S 160 fixed protection							
Type	I_n (A)	Code No.	Poles	I_{cu}/I_{cs} 400V [kA]	Adjustment thermal/magnetic	Weight [kg]	Packaging [pcs]
EB2S 160/3SF 16A 3p	16	004671827	3	25/13	fixed/fixed	0,80	1
EB2S 160/3SF 20A 3p	20	004671828					
EB2S 160/3SF 25A 3p	25	004671829					
EB2S 160/3SF 32A 3p	32	004671830					
EB2S 160/3SF 40A 3p	40	004671831					
EB2S 160/3SF 50A 3p	50	004671832					
EB2S 160/3SF 63A 3p	63	004671833					
EB2S 160/3SF 80A 3p	80	004671834					
EB2S 160/3SF 100A 3p	100	004671835					
EB2S 160/3SF 125A 3p	125	004671836					
EB2S 160/4SF 16A 4p	16	004671840	4	25/13	fixed/fixed	1,00	1
EB2S 160/4SF 20A 4p	20	004671841					
EB2S 160/4SF 25A 4p	25	004671842					
EB2S 160/4SF 32A 4p	32	004671843					
EB2S 160/4SF 40A 4p	40	004671844					
EB2S 160/4SF 50A 4p	50	004671845					
EB2S 160/4SF 63A 4p	63	004671846					
EB2S 160/4SF 80A 4p	80	004671847					
EB2S 160/4SF 100A 4p	100	004671848					
EB2S 160/4SF 125A 4p	125	004671849					
EB2S 160/4SF 160A 4p	160	004671850					

EB2S 160 fixed protection							
Type	I_n (A)	Code No.	Poles	I_{cu}/I_{cs} 400V [kA]	Adjustment thermal/magnetic	Weight [kg]	Packaging [pcs]
EB2S 160/3HF 16A 3p	16	004671853	3	40/20	fixed/fixed	0,80	1
EB2S 160/3HF 20A 3p	20	004671854					
EB2S 160/3HF 25A 3p	25	004671855					
EB2S 160/3HF 32A 3p	32	004671856					
EB2S 160/3HF 40A 3p	40	004671857					
EB2S 160/3HF 50A 3p	50	004671858					
EB2S 160/3HF 63A 3p	63	004671859					
EB2S 160/3HF 80A 3p	80	004671860					
EB2S 160/3HF 100A 3p	100	004671861					
EB2S 160/3HF 125A 3p	125	004671862					
EB2S 160/4HF 16A 4p	16	004671866	4	40/20	fixed/fixed	1,00	1
EB2S 160/4HF 20A 4p	20	004671867					
EB2S 160/4HF 25A 4p	25	004671868					
EB2S 160/4HF 32A 4p	32	004671869					
EB2S 160/4HF 40A 4p	40	004671870					
EB2S 160/4HF 50A 4p	50	004671871					
EB2S 160/4HF 63A 4p	63	004671872					
EB2S 160/4HF 80A 4p	80	004671873					
EB2S 160/4HF 100A 4p	100	004671874					
EB2S 160/4HF 125A 4p	125	004671875					
EB2S 160/4HF 160A 4p	160	004671876					





EB2S 160 adjustable protection

Type	I_n (A)	Code No.	Poles	I_{cu}/I_{cs} 400V [kA]	Adjustment thermal/magnetic	Weight [kg]	Packaging [pcs]
EB2S 160/3LA 25A 3p	25	004671879	3	16/8	adjustable (0.63-1)/fixed	0,80	1
EB2S 160/3LA 40A 3p	40	004671880					
EB2S 160/3LA 63A 3p	63	004671881					
EB2S 160/3LA 80A 3p	80	004671882					
EB2S 160/3LA 100A 3p	100	004671883					
EB2S 160/3LA 125A 3p	125	004671884					
EB2S 160/3LA 160A 3p	160	004671885					
EB2S 160/4LA 25A 4p	25	004671889	4	16/8	adjustable (0.63-1)/fixed	1,0	
EB2S 160/4LA 40A 4p	40	004671890					
EB2S 160/4LA 63A 4p	63	004671891					
EB2S 160/4LA 80A 4p	80	004671892					
EB2S 160/4LA 100A 4p	100	004671893					
EB2S 160/4LA 125A 4p	125	004671894					
EB2S 160/4LA 160A 4p	160	004671895					

EB2S 160 adjustable protection

Type	I_n (A)	Code No.	Poles	I_{cu}/I_{cs} 400V [kA]	Adjustment thermal/magnetic	Weight [kg]	Packaging [pcs]
EB2S 160/3SA 25A 3p	25	004671899	3	25/13	adjustable (0.63-1)/fixed	0,80	1
EB2S 160/3SA 40A 3p	40	004671900					
EB2S 160/3SA 63A 3p	63	004671901					
EB2S 160/3SA 80A 3p	80	004671902					
EB2S 160/3SA 100A 3p	100	004671903					
EB2S 160/3SA 125A 3p	125	004671904					
EB2S 160/3SA 160A 3p	160	004671905					
EB2S 160/4SA 25A 4p	25	004671909	4	25/13	adjustable (0.63-1)/fixed	1,0	
EB2S 160/4SA 40A 4p	40	004671910					
EB2S 160/4SA 63A 4p	63	004671911					
EB2S 160/4SA 80A 4p	80	004671912					
EB2S 160/4SA 100A 4p	100	004671913					
EB2S 160/4SA 125A 4p	125	004671914					
EB2S 160/4SA 160A 4p	160	004671915					

EB2S 160 adjustable protection

Type	I_n (A)	Code No.	Poles	I_{cu}/I_{cs} 400V [kA]	Adjustment thermal/magnetic	Weight [kg]	Packaging [pcs]
EB2S 160/3HA 25A 3p	25	004671919	3	40/20	adjustable (0.63-1)/fixed	0,80	1
EB2S 160/3HA 40A 3p	40	004671920					
EB2S 160/3HA 63A 3p	63	004671921					
EB2S 160/3HA 80A 3p	80	004671922					
EB2S 160/3HA 100A 3p	100	004671923					
EB2S 160/3HA 125A 3p	125	004671924					
EB2S 160/3HA 160A 3p	160	004671925					
EB2S 160/4HA 25A 4p	25	004671929	4	40/20	adjustable (0.63-1)/fixed	1,0	
EB2S 160/4HA 40A 4p	40	004671930					
EB2S 160/4HA 63A 4p	63	004671931					
EB2S 160/4HA 80A 4p	80	004671932					
EB2S 160/4HA 100A 4p	100	004671933					
EB2S 160/4HA 125A 4p	125	004671934					
EB2S 160/4HA 160A 4p	160	004671935					

Low breaking capacity moulded case circuit breakers

EB2S 250 fixed protection

Type	I_n (A)	Code No.	Poles	I_{cu}/I_{cs} 400V [kA]	Adjustment thermal/magnetic	Weight [kg]	Packaging [pcs]
EB2S 250/3LF 200A 3p	200	004671812	3	16/8	fixed/fixed	1,50	1
EB2S 250/3LF 250A 3p	250	004671813				1,50	
EB2S 250/4LF 200A 4p	200	004671825	4			1,90	
EB2S 250/4LF 250A 4p	250	004671826				1,90	

EB2S 250 fixed protection

Type	I_n (A)	Code No.	Poles	I_{cu}/I_{cs} 400V [kA]	Adjustment thermal/magnetic	Weight [kg]	Packaging [pcs]
EB2S 250/3SF 200A 3p	200	004671838	3	25/19	fixed/fixed	1,50	1
EB2S 250/3SF 250A 3p	250	004671839				1,50	
EB2S 250/4SF 200A 4p	200	004671851	4			1,90	
EB2S 250/4SF 250A 4p	250	004671852				1,90	

EB2S 250 fixed protection

Type	I_n (A)	Code No.	Poles	I_{cu}/I_{cs} 400V [kA]	Adjustment thermal/magnetic	Weight [kg]	Packaging [pcs]
EB2S 250/3HF 200A 3p	200	004671864	3	40/20	fixed/fixed	1,50	1
EB2S 250/3HF 250A 3p	250	004671865				1,50	
EB2S 250/4HF 200A 4p	200	004671877	4			1,90	
EB2S 250/4HF 250A 4p	250	004671878				1,90	

EB2S 250 adjustable protection

Type	I_n (A)	Code No.	Poles	I_{cu}/I_{cs} 400V [kA]	Adjustment thermal/magnetic	Weight [kg]	Packaging [pcs]
EB2S 250/3LA 200A 3p	200	004671887	3	16/8	adjustable (0.63-1)/ adjustable (5-11)	1,50	1
EB2S 250/3LA 250A 3p	250	004671888				1,50	
EB2S 250/4LA 200A 4p	200	004671897	4			1,90	
EB2S 250/4LA 250A 4p	250	004671898				1,90	

EB2S 250 adjustable protection

Type	I_n (A)	Code No.	Poles	I_{cu}/I_{cs} 400V [kA]	Adjustment thermal/magnetic	Weight [kg]	Packaging [pcs]
EB2S 250/3SA 200A 3p	200	004671907	3	25/19	adjustable (0.63-1)/ adjustable (5-11)	1,50	1
EB2S 250/3SA 250A 3p	250	004671908				1,50	
EB2S 250/4SA 200A 4p	200	004671917	4			1,90	
EB2S 250/4SA 250A 4p	250	004671918				1,90	

EB2S 250 adjustable protection

Type	I_n (A)	Code No.	Poles	I_{cu}/I_{cs} 400V [kA]	Adjustment thermal/magnetic	Weight [kg]	Packaging [pcs]
EB2S 250/3HA 200A 3p	200	004671927	3	40/20	adjustable (0.63-1)/ adjustable (5-11)	1,50	1
EB2S 250/3HA 250A 3p	250	004671928				1,50	
EB2S 250/4HA 200A 4p	200	004671937	4			1,90	
EB2S 250/4HA 250A 4p	250	004671938				1,90	



ETIBREAK



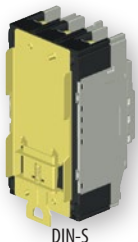
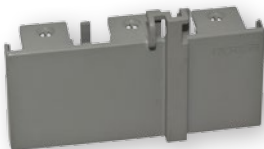
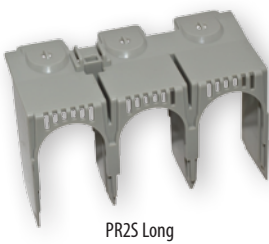
Internal accessories



Accessories for EB25 160 and 250

Internal accessories (can be mounted by customer)	Code No.	Description	Poles	Packaging [pcs]
Auxiliary switch, PS2S 160-250	004671950	1 changeover contact	3p, 4p	1
Alarm switch, SS2S 160-250	004671951	1 changeover contact		
Shunt trip unit, DA2S 160-250 AC 200-240V	004671953	AC 200-240V		
Shunt trip unit, DA2S 160-250 AC 380-450V	004671954	AC 380-450V		
Shunt trip unit, DA2S 160-250 DC 24V	004671955	DC 24V		
Undervoltage trip unit, NA2S 160-250 AC 200-240V	004671956	AC 200-240V		
Undervoltage trip unit, NA2S 160-250 AC 380-450V	004671957	AC 380-450V		
Undervoltage trip unit, NA2S 160-250 DC 24V	004671958	DC 24V		

External accessories



Accessories for EB25 160

	Code No.	Poles	Packaging [pcs]	
Breaker mounted handle, R02S 160	004671970	3p, 4p	1	
Panel mounted handle, R02S 160P	004671971			
Attach busbar, ZB2S 160/3 Spread	004671972	3p	set = 3pcs	
Attach busbar, ZB2S 160/4 Spread	004671977	4p	set = 4pcs	
Interpole barrier, IZ2S 160	004671973	3p	1	
Terminal covers, PR2S 160/3 long	004671974	3p		
Terminal covers, PR2S 160/4 long	004671990	4p		
Terminal covers, PR2S 160/3 wide	004671991	3p		
Terminal covers, PR2S 160/4 wide	004671992	4p		
Terminal covers, PR2S 160/3 RC	004671993	3p		
Terminal covers, PR2S 160/4 RC	004671994	4p		
Din Rail Adaptor, DIN-S 160	004671975	3p, 4p		
Rear Connections, RC2S 160/3	004671978	3p		set = 3pcs
Rear Connections, RC2S 160/4	004671979	4p		set = 4pcs

Low breaking capacity moulded case circuit breakers

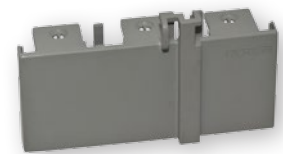
Accessories for EB2S 250			
	Code No.	Poles	Packaging [pcs]
Motor operator, MO2S 250 AC230-240V	004671980	3p, 4p	1
Motor operator, MO2S 250 DC24V	004671981		
Breaker mounted handle, RO2S 250	004671982		
Panel mounted handle, RO2S 250P	004671983		
Attach busbar, ZB2S 250/3 Spread	004671984	3p	set = 3pcs
Attach busbar, ZB2S 250/4 Spread	004671995	4p	set = 4pcs
Rear Connections, RC2S 250/3	004671996	3p	set = 3pcs
Rear Connections, RC2S 250/4	004671997	4p	set = 4pcs
Cable Clamps, SP2S 250/3	004671998	3p	set = 3pcs
Cable Clamps, SP2S 250/4	004671999	4p	set = 4pcs
Interpole barrier, IZ2S 250	004671985	3p, 4p	1
Terminal covers, PR2S 250/3 short	004671986	3p	
Terminal covers, PR2S 250/4 short	004672000	4p	
Terminal covers, PR2S 250/3 long	004672001	3p	
Terminal covers, PR2S 250/4 long	004672002	4p	
Terminal covers, PR2S 250/3 spread	004672003	3p	
Terminal covers, PR2S 250/4 spread	004672004	4p	
Terminal covers, PR2S 250/3 RC	004672005	3p	
Terminal covers, PR2S 250/4 RC	004672006	4p	
Terminal covers, PR2S 250/3 CC	004672007	3p	
Terminal covers, PR2S 250/4 CC	004672008	4p	
Busbar adapter 3p, DA-60/250/3/FE-5	001696162	3p	
Busbar adapter 4p, DA-60/250/4/FE-5	001696163	4p	
DIN 125 & 250	004671186	3p, 4p	



PR2S Long



PR2S Short



PR2S RC



MO2S



DA-60