

Accessories

Internal accessories



NA2



PS2

Undervoltage trip for EB2, ED2 125-630

Internal accessories can be mounted by customer	Code No.	Description	Poles	Packaging [pcs]
Undervoltage trip unit NA2 125-630AF AC200-240V	004671153	200-240 V AC	3p,4p	1/1
Undervoltage trip unit NA2 125-630AF AC380-450V	004671154	380-450 V AC	3p,4p	1/1
Undervoltage trip unit NA2 125-630AF DC24V	004671155	24 V DC	3p,4p	1/1
Undervoltage trip unit NA2 125-630AF DC100-120V	004671156	100-120 V DC	3p,4p	1/1
Undervoltage trip unit NA2 125-630AF DC200-240V	004671157	200-240 V DC	3p,4p	1/1

Important note: The shunt trip unit DA and undervoltage trip unit NA cannot be mounted in the same breaker

Undervoltage trip for EB2, ED2 800-1600

Internal accessories can be mounted by customer	Code No.	Description	Poles	Packaging [pcs]
Undervoltage trip unit NA2 800-1600AF AC380-415V	004672299	AC 380-415V	3p,4p	1/1
Undervoltage trip unit NA2 800-1600AF AC220-240V	004672300	AC 220-240 V	3p,4p	1/1
Undervoltage trip unit NA2 800-1600AF AC415-450V	004672301	AC 415-450 V	3p,4p	1/1
Undervoltage trip unit NA2 800-1600AF DC24V	004672302	24 V DC	3p,4p	1/1
Undervoltage trip unit NA2 800-1600AF DC100-120V	004672303	100-120 V DC	3p,4p	1/1
Undervoltage trip unit NA2 800-1600AF DC200-240V	004672304	200-240 V DC	3p,4p	1/1

Important note: The shunt trip unit DA and undervoltage trip unit NA cannot be mounted in the same breaker

Undervoltage trip for EB2, ED2 125-630AF - Time Delay

Internal accessories can be mounted by customer	Code No.	Description	Poles	Packaging [pcs]
NA2 TD 125-630AF AC230-240V	004672341	230-240V AC	3p,4p	1/1
NA2 TD 125-630AF AC380-415V	004672342	380-415V AC	3p,4p	1/1
NA2 TD 125-630AF AC440-450V	004672343	440-450V AC	3p,4p	1/1
NA2 TD 125-630AF DC24V	004672344	24V DC	3p,4p	1/1
NA2 TD 125-630AF DC115-120V	004672345	115-120V DC	3p,4p	1/1

Important note: The shunt trip unit DA and undervoltage trip unit NA cannot be mounted in the same breaker

Time delay of 500ms

Time delay units are fitted to the outside of MCCBs

Undervoltage trip for EB2, ED2 400-630AF only 4p - Time Delay

Internal accessories can be mounted by customer	Code No.	Description	Poles	Packaging [pcs]
NA2 TD 4p 400-630AF AC230-240V	004672365	230-240V AC	4p	1/1
NA2 TD 4p 400-630AF AC380-415V	004672366	380-415V AC	4p	1/1
NA2 TD 4p 400-630AF AC440-450V	004672367	440-450V AC	4p	1/1
NA2 TD 4p 400-630AF DC24V	004672368	24V DC	4p	1/1
NA2 TD 4p 400-630AF DC115-120V	004672369	115-120V DC	4p	1/1

Important note: The shunt trip unit DA and undervoltage trip unit NA cannot be mounted in the same breaker

Time delay of 500ms

Time delay units are fitted to the outside of MCCBs

Undervoltage trip for EB2, ED2 800-1000AF - Time Delay

Internal accessories can be mounted by customer	Code No.	Description	Poles	Packaging [pcs]
NA2 TD 800-1000AF AC230-240V	004672305	230-240V AC	3p, 4p	1/1
NA2 TD 800-1000AF AC380-415V	004672306	380-415V AC	3p, 4p	1/1
NA2 TD 800-1000AF AC440-450V	004672307	440-450V AC	3p, 4p	1/1
NA2 TD 800-1000AF DC24V	004672308	24V DC	3p, 4p	1/1
NA2 TD 800-1000AF DC115-120V	004672309	115-120V DC	3p, 4p	1/1

Important note: The shunt trip unit DA and undervoltage trip unit NA cannot be mounted in the same breaker

Time delay of 500ms

Time delay units are fitted to the outside of MCCBs

Undervoltage trip for EB2, ED2 1250-1600AF - Time Delay

Internal accessories can be mounted by customer	Code No.	Description	Poles	Packaging [pcs]
NA2 TD 1250-1600AF AC230-240V	004672390	230-240V AC	3p, 4p	1/1
NA2 TD 1250-1600AF AC380-415V	004672391	380-415V AC	3p, 4p	1/1
NA2 TD 1250-1600AF AC440-450V	004672392	440-450V AC	3p, 4p	1/1
NA2 TD 1250-1600AF DC24V	004672393	24V DC	3p, 4p	1/1
NA2 TD 1250-1600AF DC115-120V	004672394	115-120V DC	3p, 4p	1/1

Important note: The shunt trip unit DA and undervoltage trip unit NA cannot be mounted in the same breaker

Time delay of 500ms

Time delay units are fitted to the outside of MCCBs

Auxiliary & Alarm switch for EB2, ED2 125-1600 AF

Internal accessories can be mounted by customer	Code No.	Description	Poles	Packaging [pcs]
Auxiliary switch, PS2 125-1600AF	004671141	1 changeover contact	3p, 4p	1/1
Auxiliary switch, heavy duty PS2-NO 125-1600AF	004671142	1 contact, NO	3p, 4p	1/1
Auxiliary switch, heavy duty PS2-NC 125-1600AF	004671143	1 contact, NC	3p, 4p	1/1
Alarm switch SS2 125-1600AF	004671144	1 changeover contact	3p, 4p	1/1
Alarm switch, heavy duty SS2-NO 125-1600AF	004671145	1 contact, NO	3p, 4p	1/1
Alarm switch, heavy duty SS2-NC 125-1600AF	004671146	1 contact, NC	3p, 4p	1/1



SS2

Shunt trip for EB2, ED2 125-1000A

Internal accessories can be mounted by customer	Code No.	Description	Poles	Packaging [pcs]
DA2 125-1000AF AC200-240V	004671147	AC200-240V	3p, 4p	1/1
DA2 125-1000AF AC380-450V	004671148	AC380-450V	3p, 4p	1/1
DA2 125-1000AF DC24V	004671149	DC24V	3p, 4p	1/1
DA2 125-1000AF DC48V	004671150	DC48V	3p, 4p	1/1
DA2 125-1000AF DC100-120V	004671151	DC110-120V	3p, 4p	1/1
DA2 125-1000AF DC 200-240V	004671152	DC 200-240V	3p, 4p	1/1
DA2 125-1000AF DC 12V	004671159	12V DC	3p, 4p	1/1
DA2 125-1000AF AC 24V	004671189	24V AC	3p, 4p	1/1

Important note: The shunt trip unit DA and undervoltage trip unit NA cannot be mounted in the same breaker



DA2

Shunt trip for EB2, ED2 1250 & 1600A

Internal accessories can be mounted by customer	Code No.	Description	Poles	Packaging [pcs]
DA2 1250-1600AF AC200-240V	004671135	AC200-240V	3p, 4p	1/1
DA2 1250-1600AF AC380-450V	004671136	AC380-450V	3p, 4p	1/1
DA2 1250-1600AF DC24V	004671137	DC24V	3p, 4p	1/1
DA2 1250-1600AF DC48V	004671138	DC48V	3p, 4p	1/1
DA2 1250-1600AF DC100-120V	004671139	DC110-120V	3p, 4p	1/1
DA2 1250-1600AF DC 200-240V	004671140	DC 200-240V	3p, 4p	1/1
DA2 1250-1600AF AC 24V	004671190	24V AC	3p, 4p	1/1

Important note: The shunt trip unit DA and undervoltage trip unit NA cannot be mounted in the same breaker

External accessories



PSPSS / PSHUV



PIO



ZB2 Straight



M02



IP3X R02

Accessories for EB2, ED2 125-1600 AF

	Code No	Poles	Packaging [pcs]
Plug for aux. And alarm switches PSPSS 125-630AF	004671457	3p,4p	1/1
Plug for shunt trips and underv. trips PSHUV 125-630AF	004671458	3p,4p	1/1
Socket – for internal accessories PIO 125-1000AF	004671459	3p,4p	1/1
Mechanical interlock, MW cable 1m	004671178	3p,4p	1/1
Mechanical interlock, MW cable 1,5m	004671179	3p,4p	1/1
OCR checker 200-240V AC	004672310	3p,4p	1/1
Terminal cover lock PZ 125-630AF	004672400	3p,4p	1/1

Accessories for EB2, ED2 125

	Code No	Poles	Packaging [pcs]
Attach busbar, ZB2 125/3 Straight	004671161	3p	3
Attach busbar, ZB2 125/4 Straight	004671162	4p	3
Solderless Terminal, SP2 125/3	004671163	3p	4
Solderless Terminal, SP2 125/4	004671164	4p	4
Rear connections, RC2 125/3	004671187	3p	3
Rear connections, RC2 125/4	004671188	4p	4

Accessories for EB2, ED2 125

	Code No	Poles	Packaging [pcs]
Motor Operator, M02 125 AC230-240V	004671165	3p,4p	1
Motor Operator, M02 125 AC100-110V	004671311	3p,4p	1
Motor Operator, M02 125 DC24V	004671313	3p,4p	1
Motor Operator, M02 125 DC48V	004671314	3p,4p	1
Motor Operator, M02 125 DC100V	004671315	3p,4p	1
Motor Operator, M02 125 AC230-240V, reset	004671166	3p,4p	1
Motor Operator, M02 125 AC100-110V, reset	004671316	3p,4p	1
Motor Operator, M02 125 DC24V, reset	004671318	3p,4p	1
Motor Operator, M02 125 DC48V, reset	004671319	3p,4p	1
Motor Operator, M02 125 DC100V, reset	004671320	3p,4p	1

Accessories for EB2, ED2 125

	Code No	Poles	Packaging [pcs]
Door Flange, PR2 125-250	004671167	3p,4p	1
Door Flange, PR2 - mot 125-250	004671472	3p,4p	1
Breaker mounted handle IP3X, R02 125, black	004671168	3p,4p	1
Breaker mounted handle IP3X, R02 125, keylock (cylindrical), black	004671169	3p,4p	1
Breaker mounted handle IP3X, R02 125, red	004671321	3p,4p	1
Breaker mounted handle IP3X, R02 125, keylock (cylindrical), red	004671322	3p,4p	1
Door mounted handle IP55, R02 125P, black	004671170	3p,4p	1
Door mounted handle IP65, R02 125P, keylock (cylindrical), black	004671171	3p,4p	1
Door mounted handle IP55, R02 125P, red	004671323	3p,4p	1
Door mounted handle IP65, R02 125P, keylock (cylindrical), red	004671324	3p,4p	1

Handle operating mechanism can be padlocked in OFF

Accessories for EB2, ED2 125

	Code No	Poles	Packaging [pcs]
Slide mechanical interlock, MS 125 3P, MO or RO assembly not possible	004671172	3p	1
Slide mechanical interlock, MS 125 4P, MO or RO assembly not possible	004671173	4p	1
Link mechanical interlock, MLR 125 right, MO or RO assembly possible	004671174	3p, 4p	1
Link mechanical interlock, MLL 125 left 3p, MO or RO assembly possible	004671175	3p	1
Link mechanical interlock, MLL 125 left 4p, MO or RO assembly possible	004671176	4p	1
Wire mechanical interlock, MW 125, mechanism, MO or RO assembly possible	004671177	3p, 4p	1

Link mechanical configuration; MLR_right + MLL_left

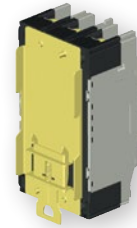
Wire mechanical configuration; 2x MW_mech. + MW_cable



MLR+MLL

Accessories for EB2, ED2 125

	Code No	Poles	Packaging [pcs]
Handle locks, ZA2 125-250	004671180	3p, 4p	1
Terminal cover lock, PZ 125-630AF	004672400	3p, 4p	1
Terminal cover, PRS2 125/3, front	004671181	3p	1
Terminal cover, PRS2 125/4, front	004671182	4p	1
Terminal cover, PRS2-SP 125/3, cable clamps	004671183	3p	1
Terminal cover, PRS2-SP 125/4, cable clamps	004671184	4p	1
Terminal cover, PRS2-NPF 125/3, plug-in	004671473	3p	1
Terminal cover, PRS2-NPF 125/4, plug-in	004671474	4p	1
Interpol barrier, IZ2 125	004671185	3p, 4p	1
DIN rail adapter, DIN 125 & 250	004671186	3p, 4p	1



DIN 125, 250



PRS2

Accessories for EB2, ED2 125

	Code No	Poles	Packaging [pcs]
Fixed plug-in 3-p, NPF 125	004671451	3p	1
Fixed plug-in 4-p, NPF 125	004671452	4p	1
Plug-in Conversion 3-p, NPI 125	004671453	3p	1
Plug-in Conversion 4-p, NPI 125	004671454	4p	1
Extension terminal for fixed Plug-in 3-p, SK3 125	004671455	3p	3
Extension terminal for fixed Plug-in 4-p, SK4 125	004671456	4p	4

- basic configuration: fixed plug-in + plug-in conversion

- extension terminals is used when fixed part of plug-in is under mounting plate - not used for basic configuration

- if additional accessories are installed in MCCB, plugs and sockets (PSPSS, PSHUV and PIO) are required



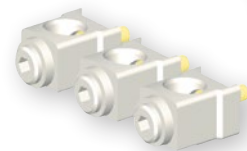
NPF



NPI

Accessories for EB2, ED2 160 and EB2, ED2 250

	Code No	Poles	Packaging [pcs]
Attach busbar ZB2 250/3 Offset	004671191	3p	3
Attach busbar, ZB2 250/4 Straight	004671192	4p	3
Attach busbar, ZB2 250/3 Straight	004671325	3p	3
Solderless Terminal, SP2 250/3	004671193	3p	4
Solderless Terminal, SP2 250/4	004671194	4p	4
Rear connections, RC2 250/3S-L	004671477	3p	3
Rear connections, RC2 250/3E	004671478	3p	3
Rear connections, RC2 250/4S-L	004671479	4p	4
Rear connections, RC2 250/4E	004671480	4p	4
Busbar adapter 3p, DA-60/250/3/FE-5	001696162	3p	1
Busbar adapter 4p, DA-60/250/4/FE-5	001696163	4p	1



SP2



ZB2 Offset



RC2



DA-60



MO2

Accessories for EB2, ED2 160 and EB2, ED2 250

	Code No	Poles	Packaging [pcs]
Motor Operator, MO2 250 AC230-240V	004671195	3p, 4p	1
Motor Operator, MO2 250 AC100-110V	004671331	3p, 4p	1
Motor Operator, MO2 250 DC24V	004671333	3p, 4p	1
Motor Operator, MO2 250 DC48V	004671334	3p, 4p	1
Motor Operator, MO2 250 DC100V	004671335	3p, 4p	1
Motor Operator, MO2 250, AC230-240, reset	004671196	3p, 4p	1
Motor Operator, MO2 250 AC100-110V, reset	004671336	3p, 4p	1
Motor Operator, MO2 250 DC24V, reset	004671338	3p, 4p	1
Motor Operator, MO2 250 DC48V, reset	004671339	3p, 4p	1
Motor Operator, MO2 250 DC100V, reset	004671340	3p, 4p	1

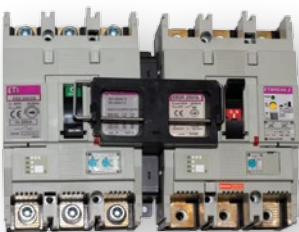


IP3X R02

Accessories for EB2, ED2 160 and EB2, ED2 250

	Code No	Poles	Packaging [pcs]
Door Flange, PR2 125-250	004671167	3p, 4p	1
Door Flange, PR2 - mot 125-250	004671472	3p, 4p	1
Breaker mounted handle IP3X, R02 250, black	004671197	3p, 4p	1
Breaker mounted handle IP3X, R02 250, keylock (cylindrical), black	004671198	3p, 4p	1
Breaker mounted handle IP3X, R02 250, red	004671341	3p, 4p	1
Breaker mounted handle IP3X, R02 250, keylock (cylindrical), red	004671342	3p, 4p	1
Door mounted handle IP55, R02 250P, black	004671199	3p, 4p	1
Door mounted handle IP65, R02 250P, black	004671200	3p, 4p	1
Door mounted handle IP55, R02 250P, red	004671343	3p, 4p	1
Door mounted handle IP65, R02 250P, red	004671344	3p, 4p	1

Handle operating mechanism can be padlocked in OFF



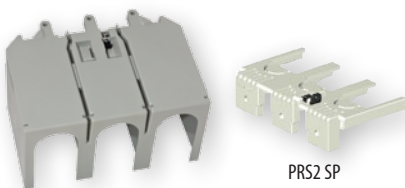
MS

Accessories for EB2, ED2 160 in EB2, ED2 250

	Code No	Poles	Packaging [pcs]
Slide mechanical interlock, MS 250 3P, MO or RO assembly not possible	004671201	3p	1
Slide mechanical interlock, MS 250 4P, MO or RO assembly not possible	004671202	4p	1
Link mechanical interlock, MLR 250 right, MO or RO assembly possible	004671203	3p, 4p	1
Link mechanical interlock, MLL 250 left 3p, MO or RO assembly possible	004671204	3p	1
Link mechanical interlock, MLL 250 left 4p, MO or RO assembly possible	004671205	4p	1
Wire mechanical interlock, MW 250, mechanism, MO or RO assembly possible	004671206	3p, 4p	1

Link mechanical interlock configuration; MLR_right + MLL_left

Wire mechanical interlock configuration; 2xMW_mech. + MW_cable



PRS2

PRS2 SP

Accessories for EB2, ED2 160 and EB2, ED2 250

	Code No	Poles	Packaging [pcs]
Handle locks, ZA2 125-250	004671180	3p, 4p	1
Terminal cover lock, PZ 125-630AF	004672400	3p, 4p	1
Terminal cover, PRS2 250/3, front	004671207	3p	1
Terminal cover, PRS2 250/4, front	004671208	4p	1
Terminal cover, PRS2-SP 250/3, cable clamps	004671209	3p	1
Terminal cover, PRS2-SP 250/4, cable clamps	004671210	4p	1
Terminal cover, PRS2-NPF 250/3, plug-in	004671475	3p	1
Terminal cover, PRS2-NPF 250/4, plug-in	004671476	4p	1
DIN rail adapter, DIN 125 & 250	004671186	3p, 4p	1

Accessories

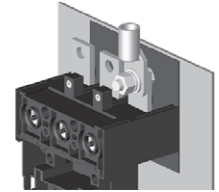
Accessories for EB2, ED2 160 and EB2, ED2 250

	Code No	Poles	Packaging [pcs]
Interpol barrier, IZ2 250	004671211	3p, 4p	1
Lateral block, LTBL 250, left	004671212	3p, 4p	1
Lateral block, LTBR 250, right	004671213	3p, 4p	1
Fixed plug-in 3-p, NPF 250	004671460	3p	1
Fixed plug-in 4-p, NPF 250	004671461	4p	1
Plug-in Conversion 3-p, NPI 250 for use with EB2 160/3S, 250/3L_S	004671462	3p	1
Plug-in Conversion 4-p, NPI 250 for use with EB2 160/4S, 250/4L_S	004671463	4p	1
Plug-in Conversion 3-p, NPI 250_E for use with EB2 250/3E	004671485	3p	1
Plug-in Conversion 4-p, NPI 250_E for use with EB2 250/4E	004671486	4p	1
Extension terminal for fixed Plug-in 3-p, SK3 250	004671464	3p	set = 3 pcs
Extension terminal for fixed Plug-in 4-p, SK4 250	004671465	4p	set = 4 pcs

- basic configuration: fixed plug-in + plug-in conversion
- extension terminals is used when fixed part of plug-in is under mounting plate - not used for basic configuration
- if additional accessories are installed in MCCB, plugs and sockets (PSP5S, PSHUV and PIO) are required,



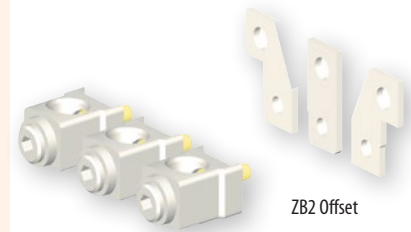
IZ2



SK3

Accessories for EB2, ED2 400 and EB2, ED2 630

	Code No	Poles	Packaging [pcs]
Attach busbar, ZB2 400/3 Offset	004671221	3p	set = 3 pcs
Attach busbar, ZB2 400/4 Offset	004671222	4p	set = 4 pcs
Attach busbar, ZB2 400/3 Straight	004671326	3p	set = 3 pcs
Attach busbar, ZB2 630/3 Straight	004671223	3p	set = 3 pcs
Attach busbar, ZB2 ZB2 630/3 Offset	004671220	3p	set = 3 pcs
Attach busbar, ZB2 630/4 Offset	004671224	4p	set = 4 pcs
Solderless Terminal, SP2 400/3	004671225	3p	set = 3 pcs
Solderless Terminal, SP2 400/4	004671226	4p	set = 4 pcs
Rear connections, RC2 400/3	004671247	3p	3
Rear connections, RC2 400/4	004671248	4p	4
Rear connections, RC2 630/3	004671249	3p	3
Rear connections, RC2 630/4	004671250	4p	4



ZB2 Offset

SP2



RC2

Accessories for EB2, ED2 400 and EB2, ED2 630

	Code No	Poles	Packaging [pcs]
Motor Operator, MO2 630, AC100-240V	004671227	3p, 4p	1
Motor Operator, MO2 630 DC24V	004671441	3p, 4p	1
Motor Operator, MO2 630 DC100-120V	004671442	3p, 4p	1
Motor Operator, MO2 630, AC100-240V, reset	004671228	3p, 4p	1
Motor Operator, MO2 630 DC24V, reset	004671443	3p, 4p	1
Motor Operator, MO2 630 DC100-120V, reset	004671444	3p, 4p	1



MO2

Accessories for EB2, ED2 400 and EB2, ED2 630

	Code No	Poles	Packaging [pcs]
Breaker mounted handle IP3X, RO2 630, black	004671229	3p, 4p	1
Breaker mounted handle IP3X, RO2 630, keylock, black	004671230	3p, 4p	1
Breaker mounted handle IP3X, RO2 630, red	004671445	3p, 4p	1
Breaker mounted handle IP3X, RO2 630, keylock, red	004671446	3p, 4p	1
Door mounted handle IP55, RO2 630 P, black	004671231	3p, 4p	1
Door mounted handle IP65, RO2 630P, black	004671232	3p, 4p	1
Door mounted handle IP55, RO2 630P, red	004671447	3p, 4p	1
Door mounted handle IP65, RO2 630P, red	004671448	3p, 4p	1

Handle operating mechanism can be padlocked in OFF



IP55, RO2P



MW



PRS2



NPI



ZB2 Straight

Accessories for EB2, ED2 400 and EB2, ED2 630

	Code No	Poles	Packaging [pcs]
Slide mechanical interlock, MS 630 3P, MO or RO assembly not possible	004671233	3p	1
Slide mechanical interlock, MS 630 4P, MO or RO assembly not possible	004671234	4p	1
Link mechanical interlock, MLR 630 right , MO or RO assembly possible	004671235	3p, 4p	1
Link mechanical interlock, MLL 630 left 3p, MO or RO assembly possible	004671236	3p	1
Link mechanical interlock, MLL 630 left 4p, MO or RO assembly possible	004671237	4p	1
Wire mechanical interlock, MW 630, mechanism, MO or RO assembly possible	004671238	3p, 4p	1

Link mechanical interlock configuration; MLR_right + MLL_left

Wire mechanical interlock configuration; 2xMW_mech. + MW_cable

Accessories for EB2, ED2 400 and EB2, ED2 630

	Code No	Poles	Packaging [pcs]
Handle locks, ZA2 400/1000	004671239	3p, 4p	1
Terminal cover lock, PZ 125-630AF	004672400	3p, 4p	1
Terminal cover, PRS2 630/3, front	004671240	3p	1
Terminal cover, PRS2 630/4, front	004671241	4p	1
Terminal cover, PRS2-SP 630/3, cable clamps	004671242	3p	1
Terminal cover, PRS2-SP 630/4, cable clamps	004671243	4p	1
Interpol barrier, IZ2 400-1600	004671244	3p, 4p	1
Lateral block, LTBL 400-1000, left	004671245	3p, 4p	1
Lateral block, LTBR 400-1000, right	004671246	3p, 4p	1
Door Flange , PR2 400-630	004671449	3p, 4p	1

Accessories for EB2, ED2 400 and EB2, ED2 630

	Code No	Poles	Packaging [pcs]
Fixed plug-in 3-p, NPF 400-630	004671466	3p	1
Fixed plug-in 4-p, NPF 400-630	004671467	4p	1
Plug-in Conversion 3-p, NPI 400-630AF - 400A 3p	004671468	3p	1
Plug-in Conversion 4-p, NPI 400-630AF - 400A 4p	004671469	4p	1
Plug-in Conversion 3-p, NPI 400-630AF - 630A 3p	004671487	3p	1
Plug-in Conversion 4-p, NPI 400-630AF - 630A 4p	004671488	4p	1
Extension terminal for fixed Plug-in 3-p, SK3 400-630	004671470	3p	set = 3 pcs
Extension terminal for fixed Plug-in 4-p, SK4 400-630	004671471	4p	set = 4 pcs

- at 630A plug-in Conversion is max Rated current 504A at 50°C and 535,5A at 30°C and 40°C

- basic configuration: fixed plug-in + plug-in conversion

- extension terminals is used when fixed part of plug-in is under mounting plate - not used for basic configuration

- if additional accessories are installed in MCCB, plugs and sockets (PSPSS, PSHUV and PIO) are required,

Accessories for EB2, ED2 800

	Code No	Poles	Packaging [pcs]
Attach busbar, ZB2 S800-630/3 Straight	004672320	3p	set = 3 pcs
Attach busbar, ZB2 S800-630/4 Straight	004672321	4p	set = 4 pcs
Attach busbar, ZB2 S800-800/3 Straight	004672322	3p	set = 3 pcs
Attach busbar, ZB2 S800-800/4 Straight	004672323	4p	set = 4 pcs

Accessories

Accessories for EB2, ED2 800 and EB2, ED2 1000

	Code No	Poles	Packaging [pcs]
Motor Operator, MO2 800-1000, AC100-240V	004672324	3p,4p	1
Motor Operator, MO2 800-1000 DC24-48V	004672325	3p,4p	1
Motor Operator, MO2 800-1000 DC100-120V	004672326	3p,4p	1

Accessories for EB2, ED2 800 and EB2, ED2 1000

	Code No	Poles	Packaging [pcs]
Handle Operating Mechanism, RO2 800-1000, black	004672327	3p,4p	1
Handle Operating Mechanism, RO2 800-1000, key lock, black	004672328	3p,4p	1
Handle Operating Mechanism, RO2 800-1000, red	004672329	3p,4p	1
Handle Operating Mechanism, RO2 800-1000, key lock, red	004672330	3p,4p	1
External Handle Operating Mechanism, RO2 800-1000 P, black	004672331	3p,4p	1
External Handle Operating Mechanism, RO2 800-1000P, red	004672332	3p,4p	1



Door mounted handle
(door interlock handle)

Accessories for EB2, ED2 800 and EB2, ED2 1000

	Code No	Poles	Packaging [pcs]
Slide mechanical interlock, MS 800 3P, MO or RO assembly not possible	004672333	3p	1
Slide mechanical interlock, MS 800 4P, MO or RO assembly not possible	004672334	4p	1
Link mechanical interlock, MLR 800-1000 right, MO or RO assembly possible	004672335	3p,4p	1
Link mechanical interlock, MLL 800-1000 left 3p, MO or RO assembly possible	004672336	3p	1
Link mechanical interlock, MLL 800-1000 left 4p, MO or RO assembly possible	004672337	4p	1
Wire mechanical interlock, MW 800-1000, mechanism, MO or RO assembly possible	004672338	3p,4p	1

Link mechanical interlock configuration; MLR_right + MLL_left

Wire mechanical interlock configuration; 2xMW_mech. + MW_cable



MW_cable

Accessories for EB2, ED2 800 and EB2, ED2 1000

	Code No	Poles	Packaging [pcs]
Handle locks, ZA2 400/1000	004671239	3p, 4p	1
Terminal cover, PRS2 800-1000/3, front	004672339	3p	1
Terminal cover, PRS2 800-1000/4, front	004672340	4p	1
Interpol barrier, IZ2 400-1600	004671244	3p,4p	1
Lateral block, LTBL 400-1000, left	004671245	3p	1
Lateral block, LTBR 400-1000, right	004671246	4p	1



PRS2

Accessories for EB2, ED2 800

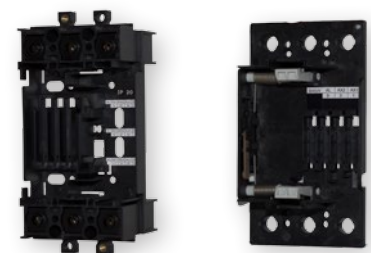
	Code No	Poles	Packaging [pcs]
Fixed, Plug-in 3-p, NPF 800/3	004672401	3	1
Fixed, Plug-in 3-p, NPF 800/3 AB	004672402	3	1
Fixed, Plug-in 4-p, NPF 800/4	004672403	4	1
Fixed, Plug-in 4-p, NPF 800/4 AB	004672404	4	1
Plug-in Conversion 3-p, NPI 800/3	004672405	3	1
Plug-in Conversion 4-p, NPI 800/4	004672406	4	1
3 flat bars for Plug-in mount blocks, ZB2 800/3 NPF	004672407	3	set = 3 pcs
4 flat bars for Plug-in mount blocks, ZB2 800/4 NPF	004672408	4	set = 4 pcs
Plug for aux. and alarm switches PSPSS 800-1000AF	004671491	3p,4p	1
Plug for shunt trips and underv. trips PSHUV 800-1000AF	004671492	3p,4p	1

- basic configuration: fixed plug-in + plug-in conversion

- extension terminals is used when fixed part of plug-in is under mounting plate - not used for basic configuration

- if additional accessories are installed in MCCB, plugs and sockets (PSPSS, PSHUV and PIO) are required,

- AB suitable for attach bars



NPF

NPI



Handle Operating Mechanism

Accessories for EB2, ED2 1250 and EB2, ED2 1600

	Code No	Poles	Packaging [pcs]
Motor Operator, MO2 1250-1600, AC240V	004672350	3p ,4p	1
Motor Operator, MO2 1250-1600 DC24-48V	004672351	3p ,4p	1
Motor Operator, MO2 1250-1600 DC100-110V	004672352	3p ,4p	1

Accessories for EB2, ED2 1250 and EB2, ED2 1600

	Code No	Poles	Packaging [pcs]
Handle Operating Mechanism, RO2 1250-1600, black	004672353	3p ,4p	1
Handle Operating Mechanism, RO2 1250-1600, key lock, black	004672354	3p ,4p	1
Handle Operating Mechanism, RO2 1250-1600, red	004672355	3p ,4p	1
Handle Operating Mechanism, RO2 1250-1600, key lock, red	004672356	3p ,4p	1
External Handle Operating Mechanism, RO2 1250-1600 P, black	004672357	3p ,4p	1
External Handle Operating Mechanism, RO2 1250-1600P, red	004672358	3p ,4p	1

Accessories for EB2, ED2 1250

	Code No	Poles	Packaging [pcs]
Slide mechanical interlock, MS 1250 3P, MO or RO assembly not possible	004672359	3p	1
Slide mechanical interlock, MS 1250 4P, MO or RO assembly not possible	004672360	4p	1

Accessories for EB2, ED2 1250

	Code No	Poles	Packaging [pcs]
Fixed plug-in 3-p, NPF 1250/3	004672411	3p	1
Fixed plug-in 4-p, NPF 1250/4	004672412	4p	1
Plug-in Conversion 3-p, NPI 1250/3	004672413	3p	1
Plug-in Conversion 4-p, NPI 1250/4	004672414	4p	1
AUX terminal 1250A Base Side	004672415	3p, 4p	1

- Plug in version of MCCB has to be assembled by ETI
 - max 3 AUX terminals can be used and each has 5 connections



Terminal Cover

Accessories for EB2, ED2 1250

	Code No	Poles	Packaging [pcs]
Terminal cover, PRS2 1250/3, front	004672361	3p	1
Terminal cover, PRS2 1250/4, front	004672362	4p	1
Interpol barrier, IZ2 400-1600	004671244	3p ,4p	3/4