

Motorised Change Over Load Break Switch MLBS..CO (1-0-2)

Description

MLBS CO is motorised changeover switch with positive break indication in range 63 to 125A (4 pole) and 250 to 630A (3 pole). It enables the on load transfer of two three-phase supplies via remote volt-free contacts, from either an external automatic controller, using pulse logic, or a switch. It is intended for use in low voltage power systems where interruption of the load supply is acceptable during transfer. MLBS CO switches have been designed, qualified and tested according to the criteria defined by standard IEC 60947-3 and IEC 60947-6-1. It can be utilised with a direct front or external operation handle.

Advantages

MLBS CO uses stable position technology, ensuring constant pressure on the contacts and preventing premature faults. In addition, they do not require a power supply to maintain position, thus protecting their loads from voltage fluctuations. The control and motorisation section can be replaced simply by removing 4 screws, with no work required on the installation cabling. Their design and compact size, enables integration within most 200 mm deep enclosures. Maintenance can be carried out easily under load, with manual operation still available. The MLBS CO is available in two supply versions, each with a broad range (+/-30%):

- 230 VAC single power supply
- 12 VDC power supply

Applications

- Generator manufacturers
- Heating
- Air conditioning
- Ventilation
- Telecommunications

Motorised Change Over Load Break Switch MLBS..CO (1-0-2)



4p Motorised Change Over Load Break Switch MLBS..CO 63 A - 125 A

Type	Description	Code No.	I _n [A]	Weight [g]	Packaging [pcs]
MLBS 63 4P CO 12VDC	1-0-2 (12V DC)	004661650	63	3.240	1
MLBS 100 4P CO 12VDC	1-0-2 (12V DC)	004661651	100	3.250	1
MLBS 125 4P CO 12VDC	1-0-2 (12V DC)	004661652	125	3.250	1
MLBS 63 4P CO 230VAC	1-0-2 (230V AC)	004661653	63	3.340	1
MLBS 100 4P CO 230VAC	1-0-2 (230V AC)	004661654	100	3.350	1
MLBS 125 4P CO 230VAC	1-0-2 (230V AC)	004661655	125	3.350	1

3p Motorised Change Over Load Break Switch MLBS..CO 250 - 630 A

Type	Description	Code No.	I _n [A]	Weight [g]	Packaging [pcs]
MLBS 250 3P CO 230VAC	1-0-2 (230 VAC)	004661870	250	8,93	1
MLBS 400 3P CO 230VAC	1-0-2 (230 VAC)	004661871	400	9,16	1
MLBS 630 3P CO 230VAC	1-0-2 (230 VAC)	004661872	630	15,56	1

Motorised Change Over Load Break Switch MLBS..CO (1-0-2)

Accessories for 4 pole MLBS..CO 63 - 125A

Bridging bars

Type	Description	Code No.	For use with	Weight [g]	Packaging [pcs]
MLBS-BR125 4P CO	Bridging bars	004661700	MLBS 63-125A 4P	160	1/100

For bridging power terminals on the top or bottom side of the switch, one reference code includes complete set of 4 pcs



MLBS-BR125 4P CO

Terminal shrouds for source side

Type	Description	Code No.	For use with	Weight [g]	Packaging [pcs]
MLBS-TSIN 4P CO	Terminal shrouds for source side	004661701	MLBS 63-125A 4P	120	1/50

IP2X protection against direct contact with terminals or connecting parts. Under one reference code 2 pcs are included for source or for load side



MLBS-TSIN 4P CO

Terminal shrouds for load side

Type	Description	Code No.	For use with	Weight [g]	Packaging [pcs]
MLBS-TSOUT 4P CO	Terminal shrouds for load side	004661702	MLBS 63-125A 4P	140	1/40

IP2X protection against direct contact with terminals or connecting parts. Under one reference code 2 pcs are included for source or for load side

Accessories for 3 pole MLBS..CO 250 - 630A

Terminal shrouds

Type	Code No.	For use with	Weight [g]	Packaging [pcs]
LBS-TS250 3P (CO)	004661501	MLBS 250, 400 3P CO 230VAC	121	1/10
LBS-TS630 3P (CO)	004661502	MLBS 630 3P CO 230VAC	242	1/5

To fully shroud: front, rear, top and bottom, 4 pcs shall be ordered. To shroud front top and bottom, 2 pcs shall be ordered.

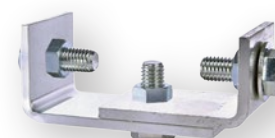


LBS-TS250 3P CO

Bridging bars

Type	I _n [A]	Description	Code No.	For use with	Section [mm]	Weight [g]	Packaging [pcs]
LBS-BR630 1P CO	630A	Bridging bar	004661593	MLBS 250...630	50x5	644	1/25

One reference code includes 1 pc of item, order for each pole separately



LBS-BR630 1P CO

Auxiliary contacts

Type	I _n [A]	Description	Code No.	For use with	Weight [g]	Packaging [pcs]
MLBS-PS11	16	Auxiliary contact CO	004661873	MLBS 250...630	120	1/100

*ATyS are already supplied with 1 NO aux contact for all three positions as standard.

** Pre-break and signalling of positions I and II: each reference provides 1 NO/NC auxiliary contact for positions I and II.



MLBS-PS11