

## Distribution boards

### Home distribution board DIDO-E

Rated current  
**63 A**

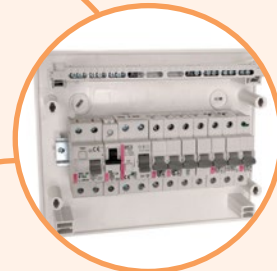
Rated voltage  
**400 V**

Degree of protection  
**IP 40**

→ N/PE terminals assure fast and simple wiring.



→ Included special marking stickers with symbols most common for home installations



→ Standard set includes:  
- metal DIN rail TH35 mounted in enclosure  
- PE/N terminals  
- mounting set with screws  
- marking stickers with symbols  
- cover for empty modular spaces



→ Possibility to add key lock to prevent unauthorized access.



→ Easy mounting system

Home distribution boards DIDO-E are available in two types: surface mounted and flush mounted boards, in one, two or three row design. Available with transparent or white doors. With lock set installation the board can be locked. Home distribution boards can easily be built in and already have a DIN rail installed for easier and quicker mounting of module devices. Terminal blocks for PE and N conductors are attached as standard for all distribution boards. Distribution boards correspond to condition of insulation protection and are in accordance with standard IEC60670-24.

## Distribution boards

### Surface mounted distribution board - IP30

Type	Code No.	Number of modules	Weight [g]	Packaging [pcs]	Rows
EC 1+1	001101044	1+1	64	1/10	1
EC 3+1	001101045	3+1	86	1/10	1
EC 3+2	001101046	3+2	170	1/5	1

### Surface mounted distribution board - transparent door

Type	Code No.	Number of modules	Weight [g]	Packaging [pcs]	Rows
ECT8PT transparent door	001101000	4(+4)	598	1/5	1
ECT12PT transparent door	001101001	12	952	1/5	1
ECT18PT transparent door	001101002	18	1207	1/5	1
ECT24PT transparent door	001101003	24	1444	1/5	2
ECT36PT transparent door	001101004	36	1965	1/5	3
ECT48PT transparent door	001101020	48	2200	1/5	4

### Surface mounted distribution board - white door

Type	Code No.	Number of modules	Weight [g]	Packaging [pcs]	Rows
ECT8PO white door	001101005	4(+4)	598	1/5	1
ECT12PO white door	001101006	12	952	1/5	1
ECT18PO white door	001101007	18	1207	1/5	1
ECT24PO white door	001101008	24	1444	1/5	2
ECT36PO white door	001101009	36	1965	1/5	3
ECT48PO white door	001101021	48	2200	1/5	4

### Flush mounted distribution board - transparent door

Type	Code No.	Number of modules	Weight [g]	Packaging [pcs]	Rows
ECM8PT transparent door	001101010	4(+4)	681	1/5	1
ECM12PT transparent door	001101011	12	922	1/5	1
ECM18PT transparent door	001101018	18	1200	1/5	1
ECM24PT transparent door	001101012	24	1338	1/5	2
ECM36PT transparent door	001101013	36	1785	1/5	3

### Flush mounted distribution board - white door

Type	Code No.	Number of modules	Weight [g]	Packaging [pcs]	Rows
ECM8PO white door	001101014	4(+4)	681	1/5	1
ECM12PO white door	001101015	12	922	1/5	1
ECM18PO white door	001101019	18	1200	1/5	1
ECM24PO white door	001101016	24	1338	1/5	2
ECM36PO white door	001101017	36	1785	1/5	3



ECT 8 PT

ECT 12 PT



ECT 48 PO



ECM 12 PT



ECM 36 PO



ECT 2x18 PT



ECT 3x18 PT

**Surface mounted distribution board 2x18 modules**

Type	Code No.	Number of modules	Weight [g]	Packaging [pcs]	Rows
ECT 2x18PT transparent door	001101081	2x18	2414	1/5	2
ECT 2x18PO white door	001101082	2x18		1/5	

**Flush mounted distribution board 2x18 modules**

Type	Code No.	Number of modules	Weight [g]	Packaging [pcs]	Rows
ECM 2x18PT transparent door	001101083	2x18	2414	1/5	2
ECM 2x18PO white door	001101084	2x18		1/5	

**Surface mounted distribution board 3x18 modules**

Type	Code No.	Number of modules	Weight [g]	Packaging [pcs]	Rows
ECT 3x18PT transparent door	001101040	3x18	2620	1/5	3
ECT 3x18PO white door	001101041	3x18		1/5	

**Flush mounted distribution board 3x18 modules**

Type	Code No.	Number of modules	Weight [g]	Packaging [pcs]	Rows
ECM 3x18PT transparent door	001101047	3x18	2620	1/5	3
ECM 3x18PO white door	001101048	3x18		1/5	

**Surface Mounted IT Distribution Boards DIDO-E MEDIA**



ECT24MEDIAP0



ECT48MEDIAP0

**Surface mounted, white door, perforated metal plate included**

Type	Code No.	Weight [g]	Packaging [pcs]
ECT 2x18MEDIAP0	001100210	2414	5
ECT 3x18MEDIAP0	001100211	2600	5
ECT24MEDIAP0	001100212	1444	5
ECT36MEDIAP0	001100213	1965	5
ECT48MEDIAP0	001100214	2200	5

Accessories (Schuko socket, holder, RJ45 holder) must be ordered separately

## Accessories DIDO-E

### Accessories DIDO ECT & ECM

Type	Description	Code No.	Weight [g]	Packaging [pcs]
ECMECT-L2K	Metal lock with 2 keys	001100203	50	1
PST-UNI	2x15 add-on terminal	001101051	100	1/25
MP-E	Modular cover - white (12 modules)	001101052	26	10/500
M20	Rubber gland M20	001101054	10	50/3000
M25	Rubber gland M25	001101055	12	50/2000
M32	Rubber gland M32	001101056	16	25/1000
M40	Rubber gland M40	001101057	20	25/600
ECMEDIA-2xSCH	Double schuko socket with holder	001100201	50	1
ECMEDIA-RHOLD	Device (router or modem) holder	001100202	50	1
ECMEDIA-RJ	RJ45 connector holder, 12 ports	001100206	100	1

\* PST-UNI is an extra insulating terminal (2 x 15) that can be mounted into 12, 24, 28, 36, 42, 48 and 56 module distribution boards



## Flush mounted enclosures with super thin design (metal or plastic door) DIDO ECG

→ Included mounting set for all kind of walls.

→ Front mask sealing possibility

→ Special hinge system provides left or right door opening.

→ Marking sticker with symbols

→ Possible to add key lock

→ N/PE terminals included

→ Standard set includes:

- metal DIN rail TH35
- PE/N terminals

- mounting set with screws for all kinds of walls (concrete, hollow, wooden...)

- marking stickers with symbols
- cover for empty modular spaces

→ Possible to mechanically connect two ECG enclosures side by side with special metal bracket.



**Description**

DIDO ECG are flush-mounted compact distribution boxes. They are suitable for installation in homes, schools and commercial buildings.

Main characteristics:

- Class II, double insulated
- Cable entrance from top or bottom
- Device cover with opening for 12 modules per row + 2 blended(can be removed). Can be sealed
- Thin design, 88mm depth in wall and 7mm outside the wall.
- Color: White RAL 9003

Enclosures are completely assembled with all necessary parts, such as:

- DIN rail
- Insulated terminals, neutral and ground
- Covers for free space
- Needed installation accessories for concrete and hollow walls
- Instruction manual



**Flush mounted distribution board - metal door, white**

Type	Code No.	Number of modules	Weight [g]	Packaging [pcs]	Rows
ECG14	001101025	12+2	2000	1/1	1
ECG28	001101026	24+4	2500	1/1	2
ECG42	001101027	36+6	3000	1/1	3
ECG56	001101028	48+8	3500	1/1	4
ECG70	001101029	60+10	5000	1/1	5

\*Rear side plastics conforms 650°C glow wire test; enclosures conforming 850°C glow wire test according to 60670-24, demand for hollow wall installation are on page 710

**Flush mounted distribution board - plastic door - transparent**

Type	Code No.	Number of modules	Weight [g]	Packaging [pcs]	Rows
ECG14PT	001101180	12+2	1900	5	1
ECG28PT	001101181	24+4	2400	5	2
ECG42PT	001101182	36+6	2900	5	3

\*Rear side plastics conforms 650°C glow wire test (not appropriate for wooden or hollow walls - IEC 60670-24)

**Flush mounted distribution board - plastic door - white**

Type	Code No.	Number of modules	Weight [g]	Packaging [pcs]	Rows
ECG14PO	001101183	12+2	1900	5	1
ECG28PO	001101184	24+4	2400	5	2
ECG42PO	001101185	36+6	2900	5	3

\*Rear side plastics conforms 650°C glow wire test (not appropriate for wooden or hollow walls - IEC 60670-24)

## Enclosures for multimedia and communication device DIDO ECG MEDIA

### ENCLOSURE FOR MULTIMEDIA AND COMMUNICATION DEVICES

- Telephone connection
- Modems and routers (for wireless use plastic door!)
- Antenna, cable or satellite TV connection
- Included perforated mounting plate (zinc plated steel),
- Included installation accessories for concrete and hollow walls



#### Flush mounted multimedia distribution board - perforated metal door, white

Type	Code No.	Number of mounting plates	Weight [g]	Packaging [pcs]
ECG14MEDIA-I	001101156	1	2000	1
ECG28MEDIA-I	001101157	2	2500	1
ECG42MEDIA-I	001101158	3	3000	1
ECG56MEDIA-I	001101159	4	3500	1
ECG70MEDIA-I	001101179	5	5000	1

\*Rear side plastics conforms 650°C glow wire test (not appropriate for wooden or hollow walls - IEC 60670-24)

#### Flush mounted multimedia distribution board - plastic door - transparent

Type	Code No.	Number of mounting plates	Weight [g]	Packaging [pcs]
ECG14MEDIAPT	001101186	1	2000	5
ECG28MEDIAPT	001101187	2	2500	5
ECG42MEDIAPT	001101188	3	3000	5

\*Rear side plastics conforms 650°C glow wire test (not appropriate for wooden or hollow walls - IEC 60670-24)

#### Flush mounted multimedia distribution board - plastic door - white

Type	Code No.	Number of mounting plates	Weight [g]	Packaging [pcs]
ECG14MEDIAPO	001101189	1	2000	5
ECG28MEDIAPO	001101190	2	2500	5
ECG42MEDIAPO	001101191	3	3000	5

\*Rear side plastics conforms 650°C glow wire test (not appropriate for wooden or hollow walls - IEC 60670-24)

#### Flush mounted multimedia distribution board - perforated metal door, white

Type	Code No.	Description	Weight [g]	Packaging [pcs]
ECG42COMB02/1-I	001100220	2 Media + 1 Modular row	3400	1
ECG56COMB03/1-I	001100221	3 Media + 1 Modular row	4100	1
ECG56COMB02/2-I	001100222	2 Media + 2 Modular rows	4100	1
ECG70COMB04/1-I	001100223	4 Media + 1 Modular row	4900	1
ECG70COMB03/2-I	001100224	3 Media + 2 Modular rows	4900	1
ECG70COMB02/3-I	001100225	2 Media + 3 Modular rows	5000	1

\*Rear side plastics conforms 650°C glow wire test (not appropriate for wooden or hollow walls - IEC 60670-24)



ECG42(H)COMB02/1-I



ECG56(H)COMB02/2-I

ECG70(H)COMB03/2-I







**Flush mounted multimedia distribution board - perforated metal door, white**

Type	Code No.	Description	Weight [g]	Packaging [pcs]
ECG42HCOMB02/1-I	001100226	2 Media + 1 Modular row	3400	1
ECG56HCOMB03/1-I	001100227	3 Media + 1 Modular row	4100	1
ECG56HCOMB02/2-I	001100228	2 Media + 2 Modular rows	4100	1
ECG70HCOMB04/1-I	001100229	4 Media + 1 Modular row	4900	1
ECG70HCOMB03/2-I	001100230	3 Media + 2 Modular rows	4900	1
ECG70HCOMB02/3-I	001100231	2 Media + 3 Modular rows	5000	1

Conforms 850°C glow wire test according to IEC60670-24 for hollow wall installation

**Distribution boards for installation in hollow walls by IEC 60670-24 DIDO-E ECG\_H**

**Description**

DIDO ECG are flush-mounted compact distribution boxes. They are suitable for installation in homes, schools and commercial buildings.

Main characteristics:

- Class II, double insulated
- Cable entrance from top or bottom
- Device cover with opening for 12 modules per row + 2 blended (can be removed). Can be sealed
- Thin design, 88mm depth in wall and 7mm outside the wall.
- Color: White RAL 9003

Enclosures are completely assembled with all necessary parts, such as:

- DIN rail
- Insulated terminals, neutral and ground
- Covers for free space
- Needed installation accessories for concrete and hollow walls
- Instruction manual



**Flush mounted distribution board with metal door**

Type	Code No.	Number of modules	Weight [g]	Packaging [pcs]	Rows
ECG14H	001101160	12+2	2000	1/1	1
ECG28H	001101161	24+4	2500	1/1	2
ECG42H	001101162	36+6	3000	1/1	3
ECG56H	001101163	48+8	3500	1/1	4
ECG70H	001101169	60+10	5000	1/1	5

Conforms 850°C glow wire test according to IEC60670-24 for hollow wall installation

**Flush mounted multimedia distribution board - perforated metal door, white**

Type	Code No.	Number of mounting plates	Weight [g]	Packaging [pcs]
ECG14HMEDIA-I	001100130	1	2000	1
ECG28HMEDIA-I	001100131	2	2500	1
ECG42HMEDIA-I	001100132	3	3000	1
ECG56HMEDIA-I	001100133	4	3500	1
ECG70HMEDIA-I	001100134	5	5000	1

Conforms 850°C glow wire test according to IEC60670-24 for hollow wall installation

## Distribution boards

### Accessories DIDO-E ECG

#### Accessories DIDO ECG

Type	Description	Code No.	Weight [g]	Packaging [pcs]
ECGBR*	Connecting brackets - horizontal	001101175	100	1
ECGBRV*	Connecting brackets - vertical	001100200	50	1
ECMEDIA-2xSCH	Double schuko socket with holder	001100201	50	1
ECMEDIA-RHOLD	Device(router or modem) holder	001100202	50	1
ECG-L2K	Metal lock, including 2 keys	001100205	50	1
ECMEDIA-RJ	RJ45 connector holder, 12 ports	001100206	100	1
ECMEDIA-PART**	Partition with 1x integrated socket	001100250	100	1
ECMEDIA-SCH	Extra (2nd) socket 16A, 250V for Partition	001100251	50	1

\*1 set includes 1 pair of brackets needed to mechanically connect two distribution boards

\*\*In one partition can be mounted 2 schuko sockets, one is already included, second can be ordered separately.  
Partition with 1x schuko socket is already included in ECG\_COMBO distribution board



### Flush mounted enclosures DIDO ERP

#### Description

- Flush mounted enclosure metal door (white)
- IP protection IP40
- Protection against external mechanical impacts IK08
- Insulation voltage 500V
- Colour white (RAL9016)
- Equipped with TH rails, PE/N terminals
- possibility to assemble with lock with key
- standard: PN-EN6228:2011

#### Flush mounted distribution board

Type	Code No.	Number of modules	Weight [kg]	Packaging [pcs]	PE Terminals	N Terminals
ERP24-2	001101293	2x24	6,15	1	1x24	2x11
ERP24-3	001101294	3x24	8	1	1x24	3x11
ERP24-4	001101295	4x24	9,8	1	2x24	4x11
ERP24-5	001101296	5x24	11,55	1	3x24	4x11
ERP24-6	001101297	6x24	13,3	1	3x24	4x11

#### Accessories

Type	Code No.	Weight [g]	Packaging [pcs]
lock with key ELK-ERP	001101279	56	1/10
Catch ELP	001101280	12	1/10
N terminals ERP-N1 (11)	001101281	44	1/10
PE terminals ERP-PE2 (24)	001101284	9	1/10
Mounting plate for EB2S LA/ED2S 160 3p ERP24-PM	001101287	345	1

Type designation:

**ERP24-X**

Number of modules in one row

Number of rows



ELK-ERP



ELP



ERP-N1



ERP-PE2



## Distribution boards DIDO ACT

ACT distribution boards can be used in applications with wall mounted electrical installations, like containers, wooden houses. Blended cuttings on top and bottom of enclosure for entrance of various dimensions of installation channel.

Enclosures are completely assembled with all necessary parts, such as:

- DIN rail
- Insulated terminals, neutral and ground
- Covers for free space
- Needed installation accessories
- Instruction manual



### Surface mounted distribution board - plastic door - transparent

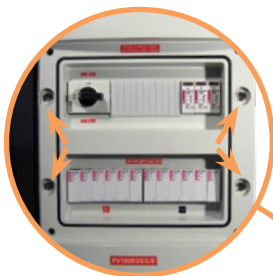
Type	Code No.	Number of modules	Weight [g]	Packaging [pcs]	Rows
ACT12PT	001100240	12+2	1300	5	1
ACT24PT	001100241	24+4	1700	5	2
ACT36PT	001100242	36+6	2100	5	3

### Surface mounted distribution board - plastic door - white

Type	Code No.	Number of modules	Weight [g]	Packaging [pcs]	Rows
ACT12PO	001100243	12+2	1300	5	1
ACT24PO	001100244	24+4	1700	5	2
ACT36PO	001100245	36+6	2100	5	3

## Modular distribution board for use outside DIDO-ECH

Rated current **63 A**    Rated voltage **400 V**    Degree of protection **IP 65**



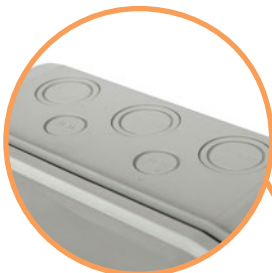
→ Left or right door opening



- Standard set includes:
- metal DIN rail TH35
  - PE/N terminals
  - mounting set with screws
  - marking stickers with symbols
  - covers for mounting holes
  - cover for empty modular spaces



→ Possible to seal enclosure, to prevent unauthorized access.



→ Prepared points for glands (cable entry)



→ Tight closing with rubber between door and housing provide IP65. Also possible to install key lock

## Distribution boards

Watertight wall-mounted distribution boards apply in domestic and industry architecture for mounting modular equipment for protection (IP65) against wet, dust and another dirtiness. Enclosure is made of high thermal stability material - ASA (Acrylonitrile-Acrylic-Styrene), plastic with good dielectrical and mechanical attributes, UV resistant (colour stability). Easy and quick montage.

Main elements:

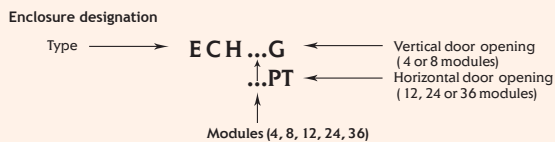
Bottom cover with DIN rail, PE and N bars and holes for PG cable inlets properly marked

Top cover with seal of the door

Transparent door made of polycarbonate (PC) with plastic lock (in standard) or metal lock with key (in option)

### Wall mounted distribution board - ECH

Type	Code No.	Number of modules	Weight [g]	Packaging [pcs]	Rows
ECH-4G	001101060	4	460	1/5	1
ECH-8G	001101061	8	680	1/5	1
ECH-12PT	001101062	12	1240	1/5	1
ECH-24PT	001101063	24	1700	1/5	2
ECH-36PT	001101064	36	2310	1/5	3



ECH-4G



ECH-8G



ECH-12PT



ECH-36PT

### Accessories

Type	Description	Code No.	Weight [g]	Packaging [pcs]
ECH-L2K	Metal lock with 2 keys	001100204	50	1
PST-UNI	2x15 add-on terminal	001101051	100	1/25
MP-ECH	Modular cover - grey (12modules)	001101053	26	10/500

\* PST-UNI is an extra insulating terminal (2 x 15) that can be mounted into 12, 24 and 36 module distribution boards



lock with key ECH-L2k

# SB (S Box) Double insulation enclosures IP66, IK10

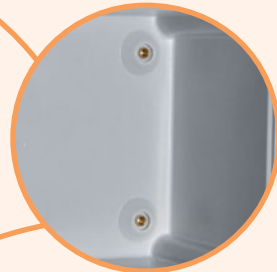
Enclosures made of fiberglass-reinforced polyester RAL 7035



→ Fixing enclosures directly on wall (surface mounted) thru pre-made holes



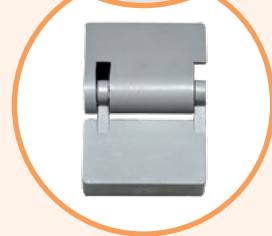
→ One enclosure includes polyester mounting plate. If necessary it is possible to order additional plate separately (as replacement)



→ Removable mounting plate fixed by 4 screws and pressed nuts



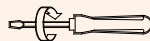
→ Top cover sealed for high IP degree (IP66)



→ Door hinges as an option, must be ordered separately (Accessories). Recommended use of the silicone to keep IP protection degree (screw holes)



→ Attaching the top cover by four screws using a flat screwdriver



(Max. 2,1 Nm)

## Double insulation wall mounted enclosures

### Description

Enclosures made of fiberglass-reinforced polyester RAL 7035, designed for extreme conditions:

- self extinguishing 960 °C , does not lead flames
- waterproof, IP66
- double insulation
- halogen free
- UV stable polycarbonate cover with gasket
- wide temperature range -30 °C / + 60 °C
- protection against external mechanical impacts: IK10
- easy handling & user friendly
- suitable for PV applications, nominal voltage 1000 V DC
- nominal current 1000A

### Enclosures - transparent lid, grey base RAL 7035

Type	Code No.	Number of modules	Weight [g]	Packaging [pcs]
SB-32	001102500	270x180x170	1,25	1
SB-44	001102501	360x360x170	2,90	1
SB-64	001102502	540x360x170	5,05	1

\*polyester mounting plate already included and mounted in the box



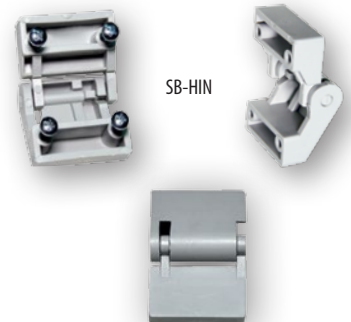
They are exceptionally durable, corrosion resistant, can withstand exposure to chemicals, water and extreme condition

### Accessories, spare parts

Type	Code No.	Description	Weight [g]	Packaging [pcs]
SB-MP32	001102503	Mounting plate for SB-32	0,16	5
SB-MP44	001102504	Mounting plate for SB-44	0,71	5
SB-MP64	001102505	Mounting plate for SB-64	0,88	5
SB-HIN	001102507	Door Hinges	0,01	1



SB-MP.



SB-HIN