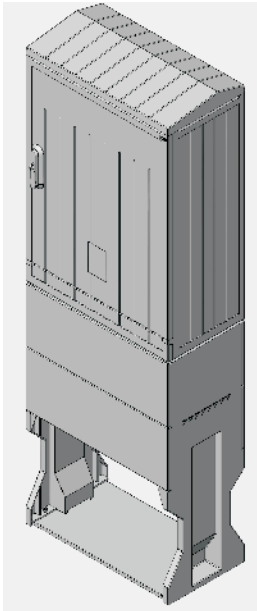


Free-standing cable distribution cabinets

Free-standing cable distribution cabinets KVR

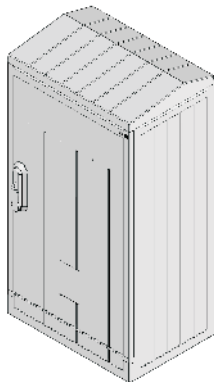


The KVR are DIN size stand-alone thermosetting enclosures with a depth of 320 mm comply with a range of requirements for electrical switchgear. They are made of thermosetting glass fibre reinforced polyester which has insulating, slow-burning and self-extinguishing properties and its typical features is high resistance to weather conditions (UV). These enclosures due to its multifunctional structure can be used in power electro distribution or telecom facilities as well as general public or industry purposes.

The module design allows to connect the enclosure with the pedestal or cable base. The external surface of these enclosures is ribbed which gives them additional strength and mechanical resilience and also prevents from covering with posters.

Doors and segments can be dismantled by hands without any tools. The ventilation system used in the enclosures minimises accumulation of humidity.

- Enclosures are made of glass fibre reinforced plastic (SMC)
- Available frames sizes 00, 0, 1, 2
- Depth 320 mm
- Modular construction: enclosure, base, pedestal
- Inclined roof
- Three-point door closing with a revolving handle and the possibility of incorporating a half-cylinder insert
- Three-point busbar holder adjustment
- Standard protection class IP44
- Material resistant to UV radiation, acids, strokes, atmospheric influences
- Colour RAL 7035
- Accessories
- Standards: IEC 62208:2011, IEC 61439-5:2010



Enclosure - regular size (874mm)

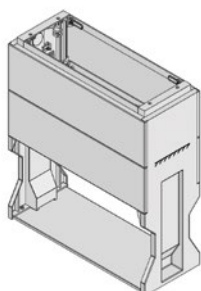
Type	Code No.	Description	Weight [kg]	Packaging [pcs]
KVR 00	001601600	Single doors	14,20	1/1
KVR 0	001601601	Single doors	16,20	1/1
KVR 1	001601602	Two doors (split)	20,60	1/1
KVR 2	001601603	Two doors (split)	26,00	1/1

With possibility to use padlock

Enclosure - 1m size (1144mm)

Type	Code No.	Description	Weight [kg]	Packaging [pcs]
KVR 01	001601604	Single doors	21	1/1
KVR 11	001601605	Two doors (split)	26,5	1/1
KVR 21	001601606	Two doors (split)	33,5	1/1

With possibility to use padlock



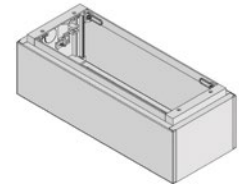
Pedestal

Type	Code No.	For use with	Weight [kg]	Packaging [pcs]
KVR-P 00	001601610	KVR 00	11,60	1
KVR-P 0	001601611	KVR 0, KVR 01	13,20	1
KVR-P 1	001601612	KVR 1, KVR 11	15,20	1
KVR-P 2	001601613	KVR 2, KVR 21	17,80	1

Free-standing cable distribution cabinets

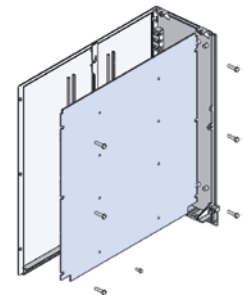
Pedestal extender

Type	Code No.	For use with	Weight [kg]	Packaging [pcs]
KVR-PE 00	001601620	KVR 00	4,60	1
KVR-PE 0	001601621	KVR 0, KVR 01	5,20	1
KVR-PE 1	001601622	KVR 1, KVR 11	6,00	1
KVR-PE 2	001601623	KVR 2, KVR 21	7,40	1



Mounting plate metal Zn for regular size (874mm) enclosure

Type	Code No.	For use with	Weight [kg]	Packaging [pcs]
KVR-MP 00	001601630	KVR 00	5,20	4
KVR-MP 0	001601631	KVR 0	6,80	4
KVR-MP 1	001601632	KVR 1	9,20	4
KVR-MP 2	001601633	KVR 2	13,00	4

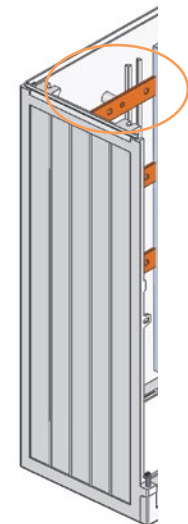


Mounting plate metal Zn for 1m size enclosure

Type	Code No.	For use with	Weight [kg]	Packaging [pcs]
KVR-MP 01	001601634	KVR 01	6,3	4
KVR-MP 11	001601635	KVR 11	8,75	4
KVR-MP 21	001601636	KVR 21	17	4
KVR-MP 2	001601633	KVR 2	13,00	4

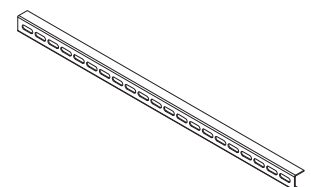
Copper bars without pressed nuts - available upon request

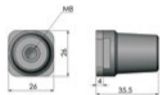
Type	Dimension, for use with	Weight [kg]	Packaging [pcs]
KVR-CB 00 30x5	30x5x444, KVR 00	0,60	4
KVR-CB 00 40x5	40x5x444, KVR 00	0,78	4
KVR-CB 0 30x5	30x5x580, KVR 0, KVR 01	0,78	4
KVR-CB 0 40x5	40x5x580, KVR 0, KVR 01	1,05	4
KVR-CB 1 40x5	40x5x774, KVR 1, KVR 11	1,35	4
KVR-CB 1 40x10	40x10x774, KVR 1, KVR 11	2,70	4
KVR-CB 1 60x10	60x10x774, KVR 1, KVR 11	4,10	4
KVR-CB 2 40x5	40x5x1104, KVR 2, KVR 21	1,90	4
KVR-CB 2 40x10	40x10x1104, KVR 2, KVR 21	3,80	4
KVR-CB 2 60x10	60x10x1104, KVR 2, KVR 21	5,80	4



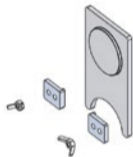
Angle bar for cable fixation

Type	Code No.	Dimension, for use with	Weight [kg]	Packaging [pcs]
KVR-FB 00	001601640	450mm, KVR 00	0,42	4
KVR-FB 0	001601641	585mm, KVR 0, KVR 01	0,58	4
KVR-FB 1	001601642	784mm, KVR 1, KVR 11	0,76	4
KVR-FB 2	001601643	1110mm, KVR 2, KVR 21	1,00	4

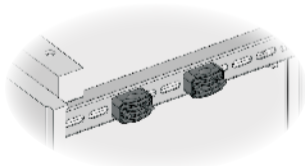




KVR-AI



KVR-OC



KVR-CH

Common accessories

Type	Code No.	Description	Weight [kg]	Packaging [pcs]
KVR-AI	001601650	Support insulator	0,025	20
KVR-OC	001601651	Cable culvert	0,35	10
KVR-CH 120	001601652	Cable holder	0,14	10
KVR-CH 240	001601653	Cable holder	0,20	10

Examples of use for KVR-AI and KVR-OC on page 743