

Motor contactor CES

ETICON CES SERIES

IEC 60947-4-1

Contact reliability

Contactors are used to remotely control and protect (in combination with overload relays) electric motors and other electric loads with nominal power up to 200kW (at 400V AC3 duty)

Auxiliary contacts

CES 6 to CES 45:

Up to 4 auxiliary contact blocks with 1 NO or 1 NC contact can be snapped onto the basic units (front).

CES 65 to CES 105:

Maximum 4 auxiliary contact blocks with 1 NO + 1 NC contacts (lateral) assembled.

When the contactors are energized, the NC contacts open before the NO contacts close.

CES 65..400 NOT POSSIBLE TO MOUNT ON DIN RAIL



Ordering:

CES	9	.	0	1	-	230V	-	50/60Hz
1	2	3	4	5	6			

- 1 - Contactor type
- 2 - Rated operational current I_e (AC3)
- 3 - Number and type NO auxiliary contacts
- 4 - Number and type NC auxiliary contacts
- 5 - Coil voltage
- 6 - Frequency

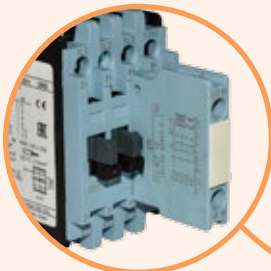
Advantages



→ Terminal clamps allow connection of different cross section cables.



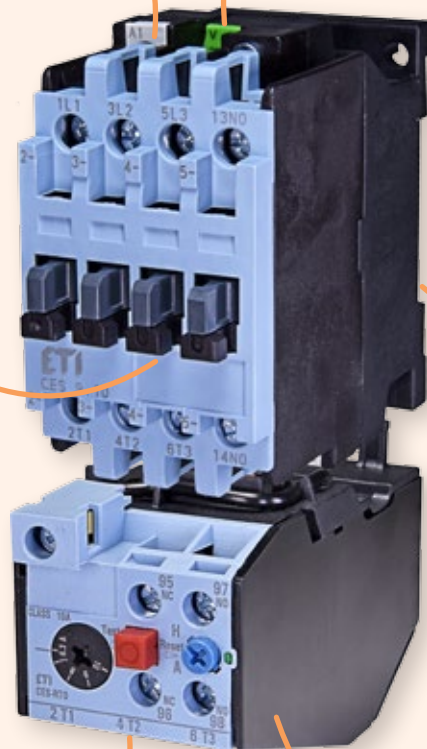
→ Different voltage range of control circuit (coils).



→ Possible to mount auxiliary contacts on top



→ Design allows to mount contactor on DIN rail TH 35 or directly on panel



→ Overload relays (bimetal) tripping class 10



→ Possible to mount overload relay directly on contactor or DIN rail TH 35 with mounting adapter



CES 6

Motor contactor CES 6; 25A(AC1); 6A/2,2kW(AC3, 400V)

Type	Code No.	Wiring diagram	Weight [g]	Packaging [pcs]
CES 6.10-24V-50/60Hz	004646500		370	1
CES 6.10-110V-50/60Hz	004646503		370	1
CES 6.10-230V-50/60Hz	004646501		370	1
CES 6.10-400V-50Hz	004646502		370	1
CES 6.10-24V DC	004646504		0,58	1
CES 6.01-24V-50/60Hz	004646505		370	1
CES 6.01-110V-50/60Hz	004646508		370	1
CES 6.01-230V-50/60Hz	004646506		370	1
CES 6.01-400V-50Hz	004646507		370	1
CES 6.01-24V DC	004646509		580	1

CES 6.10 - Integrated auxiliary contact 1xNO; CES 6.01 - Integrated auxiliary contact 1xNC



CES 9

Motor contactor CES 9; 25A(AC1); 9A/4kW(AC3, 400V)

Type	Code No.	Wiring diagram	Weight [g]	Packaging [pcs]
CES 9.10-24V-50/60Hz	004646510		370	1
CES 9.10-110V-50/60Hz	004646511		370	1
CES 9.10-230V-50/60Hz	004646512		370	1
CES 9.10-400V-50Hz	004646513		370	1
CES 9.10-24V DC	004646514		580	1
CES 9.01-24V-50/60Hz	004646515		370	1
CES 9.01-110V-50/60Hz	004646516		370	1
CES 9.01-230V-50/60Hz	004646517		370	1
CES 9.01-400V-50Hz	004646518		370	1
CES 9.01-24V DC	004646519		580	1

CES 9.10 - Integrated auxiliary contact 1xNO; CES 9.01 - Integrated auxiliary contact 1xNC



CES 12

Motor contactor CES 12; 25A(AC1); 12A/5,5kW(AC3, 400V)

Type	Code No.	Wiring diagram	Weight [g]	Packaging [pcs]
CES 12.10-24V-50/60Hz	004646520		370	1
CES 12.10-110V-50/60Hz	004646521		370	1
CES 12.10-230V-50/60Hz	004646522		370	1
CES 12.10-400V-50Hz	004646523		370	1
CES 12.10-24V DC	004646524		580	1
CES 12.10-42V-50/60Hz	004646525		370	1
CES 12.01-24V-50/60Hz	004646526		370	1
CES 12.01-110V-50/60Hz	004646527		370	1
CES 12.01-230V-50/60Hz	004646528		370	1
CES 12.01-400V-50Hz	004646529		370	1
CES 12.01-24V DC	004646530	580	1	

CES 12.10 - Integrated auxiliary contact 1xNO; CES 12.01 - Integrated auxiliary contact 1xNC



CES 18

Motor contactor CES 18; 25A(AC1); 18A/7,5kW(AC3, 400V)

Type	Code No.	Wiring diagram	Weight [g]	Packaging [pcs]
CES 18.10-24V-50/60Hz	004646531		370	1
CES 18.10-110V-50/60Hz	004646532		370	1
CES 18.10-230V-50/60Hz	004646533		370	1
CES 18.10-400V-50Hz	004646534		370	1
CES 18.10-24V DC	004646535		580	1
CES 18.01-24V-50/60Hz	004646536		370	1
CES 18.01-110V-50/60Hz	004646537		370	1
CES 18.01-230V-50/60Hz	004646538		370	1
CES 18.01-400V-50Hz	004646539		370	1
CES 18.01-24V DC	004646540		580	1

CES 18.10 - Integrated auxiliary contact 1xNO; CES 18.01 - Integrated auxiliary contact 1xNC

Motor contactor CES 25; 42A(AC1); 25A/11kW(AC3, 400V)				
Type	Code No.	Wiring diagram	Weight [g]	Packaging [pcs]
CES 25.00-24V-50/60Hz	004646541		410	1
CES 25.00-110V-50/60Hz	004646542		410	1
CES 25.00-230V-50/60Hz	004646543		410	1
CES 25.00-400V-50Hz	004646544		410	1
CES 25.00-24V DC	004646545		660	1
CES 25.00-42V-50/60Hz	004646546		410	1

Auxiliary contacts top or side mounted must be ordered separately

Motor contactor CES 32; 42A(AC1); 32A/15kW(AC3, 400V)				
Type	Code No.	Wiring diagram	Weight [g]	Packaging [pcs]
CES 32.00-24V-50/60Hz	004646547		410	1
CES 32.00-110V-50/60Hz	004646548		410	1
CES 32.00-230V-50/60Hz	004646549		410	1
CES 32.00-400V-50Hz	004646550		410	1
CES 32.00-24V DC	004646551		660	1

Auxiliary contacts top or side mounted must be ordered separately

Motor contactor CES 40; 65A(AC1); 40A/18,5kW(AC3, 400V)				
Type	Code No.	Wiring diagram	Weight [g]	Packaging [pcs]
CES 40.00-24V-50/60Hz	004646552		670	1
CES 40.00-110V-50/60Hz	004646553		670	1
CES 40.00-230V-50/60Hz	004646554		670	1
CES 40.00-400V-50Hz	004646555		670	1

Auxiliary contacts top or side mounted must be ordered separately

Motor contactor CES 45; 65A(AC1); 45A/22kW(AC3, 400V)				
Type	Code No.	Wiring diagram	Weight [g]	Packaging [pcs]
CES 45.00-24V-50/60 Hz	004646556		640	1
CES 45.00-230V-50/60 Hz	004646557		640	1
CES 45.00-400V-50Hz	004646558		640	1
CES 45.00-110V-50/60 Hz	004646559		640	1

Auxiliary contacts top or side mounted must be ordered separately

Motor contactor CES 65; 90A(AC1); 65A/30kW(AC3, 400V)				
Type	Code No.	Wiring diagram	Weight [g]	Packaging [pcs]
CES 65.22-230V-50/60Hz	004646560		1.625	1
CES 65.22-24V-50/60Hz	004646561		1.625	1

Included side mounted auxiliary contacts 2xNO+2xNC

Motor contactor CES 75; 100A(AC1); 75A/37kW(AC3, 400V)				
Type	Code No.	Wiring diagram	Weight [g]	Packaging [pcs]
CES 75.22-24V-50/60 Hz	004646562		2.530	1
CES 75.22-230V-50/60 Hz	004646563		2.530	1

Included side mounted auxiliary contacts 2xNO+2xNC

Motor contactor CES 85; 120A(AC1); 85A/45kW(AC3, 400V)				
Type	Code No.	Wiring diagram	Weight [g]	Packaging [pcs]
CES 85.22-24V-50/60 Hz	004646564		2.530	1
CES 85.22-230V-50/60 Hz	004646565		2.530	1

Included side mounted auxiliary contacts 2xNO+2xNC

Motor contactor CES 105; 120A(AC1); 105A/55kW(AC3, 400V)				
Type	Code No.	Wiring diagram	Weight [g]	Packaging [pcs]
CES 105.22-230V-50/60Hz	004646566		3.758	1
CES 105.22-24V-50/60Hz	004646567		3.758	1

Included side mounted auxiliary contacts 2xNO+2xNC



CES 25...32



CES 40...45



CES 65...140



CES 65...140

Motor contactor CES 140; 160A(AC1); 140A/75kW(AC3, 400V)

Type	Code No.	Wiring diagram	Weight [g]	Packaging [pcs]
CES 140.22-230V-50/60Hz	004646568		3.300	1

Included side mounted auxiliary contacts 2xNO+2xNC



CES 170...205

Motor contactor CES 170; 210A(AC1); 170A/90kW(AC3, 400V)

Type	Code No.	Wiring diagram	Weight [g]	Packaging [pcs]
CES 170.22-230V-50/60Hz	004646569		4.800	1

Included side mounted auxiliary contacts 2xNO+2xNC

Motor contactor CES 205; 220A(AC1); 205A/110kW(AC3, 400V)

Type	Code No.	Wiring diagram	Weight [g]	Packaging [pcs]
CES 205.22-230V-50/60Hz	004646570		4.800	1

Included side mounted auxiliary contacts 2xNO+2xNC



CES 250...300

Motor contactor CES 250; 300A(AC1); 250A/132kW(AC3, 400V)

Type	Code No.	Wiring diagram	Weight [g]	Packaging [pcs]
CES 250.22-230V-50/60Hz	004646571		6.200	1

Included side mounted auxiliary contacts 2xNO+2xNC

Motor contactor CES 300; 320A(AC1); 300A/160kW(AC3, 400V)

Type	Code No.	Wiring diagram	Weight [g]	Packaging [pcs]
CES 300.22-230V-50/60Hz	004646572		6.200	1

Included side mounted auxiliary contacts 2xNO+2xNC



CES 400

Motor contactor CES 400; 500A(AC1); 400A/200kW(AC3, 400V)

Type	Code No.	Wiring diagram	Weight [g]	Packaging [pcs]
CES 400.22-230V-50/60Hz	004646573		6.800	1

Included side mounted auxiliary contacts 2xNO+2xNC

Accessories

Auxiliary contact block - front mounted; 5,6A(230V, AC-15/AC-14), 3,8A(400V, AC-15/AC-14)

Type	Code No.	Description	For use with	Wiring diagram	Weight [g]	Packaging [pcs]
CES-BCF 10	004646574	1 NO	CES 6...CES 45		20	10
CES-BCF 01	004646575	1 NC	CES 6...CES 45		20	10

Up to max. 4 contacts



CES-BCF

Auxiliary contact block - lateral; 5,6A(230V, AC-15/AC-14), 3,8A(400V, AC-15/AC-14)

Type	Code No.	Description	For use with	Wiring diagram	Weight [g]	Packaging [pcs]
CES-BCSU 11	004646576	1 NO + 1 NC	CES 65...CES 105		52	2
CES-BCSS 11	004646577	1 NO + 1 NC	CES 65...CES 105		42	2

Up to max. 4 contacts, 2 per each side

BCSU - upgrade contact with screws

BCSS - spare part only, no mounting screws

Possible to order only multiples of 2pcs (2, 4, 6, 8...) due to the default packaging system



CES-BCSU 11



CES-BCSS 11

Mechanical interlock for mechanical locking of contactors

Type	Code No.	For use with	Weight [g]	Packaging [pcs]
CES-MIL 6-45	004646578	CES6...CES45	20	1
CES-MIL 65-300	004646579	CES65...CES300	130	1
CES-MIL 400	004646580	CES400	130	1



CES-MIL 6-45



CES-MIL 65-300

Surge suppressor

Type	Code No.	Coil voltage	For use with	Weight [g]	Packaging [pcs]
CES-DIC3	004646581	24 - 250 VDC	CES6...CES32	15	1
CES-VR4	004646582	24-48 VAC	CES6...CES45	15	1
CES-VR5	004646583	127-240 VAC	CES6...CES45	15	1
CES-VR6	004646584	240-400 VAC	CES6...CES45	23	1
CES-VR7	004646585	24-48 VAC	CES65...CES400	14	1
CES-VR8	004646586	127-240 VAC	CES65...CES400	15	1

Already integrated in CES140...CES400



CES-DIC3

Overload relay



CES-RT0

CES-RT1



CES-RT2



CES-RT3



CES-RT4 120, 135, 150



CES-RT4 160, 180



CES-RT4 250, 400

Thermal overload relays

Type	Code No.	Current setting range [A]	For use with	Weight [g]	Packaging [pcs]
CES-RT0-0,4	004646587	0,25 - 0,4	CES6...CES18	140	1
CES-RT0-0,63	004646588	0,4 - 0,63	CES6...CES18	140	1
CES-RT0-1	004646589	0,63 - 1	CES6...CES18	140	1
CES-RT0-1,6	004646590	1 - 1,6	CES6...CES18	140	1
CES-RT0-2,5	004646591	1,6 - 2,5	CES6...CES18	140	1
CES-RT0-4.0	004646592	2,5 - 4	CES6...CES18	140	1
CES-RT0-6,3	004646593	4 - 6,3	CES6...CES18	140	1
CES-RT0-10	004646594	6,3 - 10	CES6...CES18	140	1
CES-RT0-12,5	004646595	8 - 12,5	CES6...CES18	140	1
CES-RT0-18	004646596	12,5 - 18	CES6...CES18	140	1
CES-RT1-16	004646597	10 - 16	CES25...CES32	200	1
CES-RT1-25	004646598	16 - 25	CES25...CES32	200	1
CES-RT1-32	004646599	25 - 32	CES25...CES32	200	1
CES-RT2-36	004646600	25 - 36	CES40...CES45	200	1
CES-RT2-45	004646601	36 - 45	CES40...CES45	200	1
CES-RT3-57	004646602	40 - 57	CES65...CES105	400	1
CES-RT3-70	004646603	57 - 70	CES65...CES105	400	1
CES-RT3-88	004646604	70 - 88	CES65...CES105	400	1
CES-RT3-105	004646605	88 - 105	CES65...CES105	400	1
CES-RT4-120	004646606	90 - 120	CES140...CES400	700	1
CES-RT4-135	004646607	110 - 135	CES140...CES400	700	1
CES-RT4-150	004646608	120 - 150	CES140...CES400	700	1
CES-RT4-160	004646609	135 - 160	CES140...CES400	700	1
CES-RT4-180	004646610	150 - 180	CES140...CES400	2.500	1
CES-RT4-250	004646611	160 - 250	CES140...CES400	2.500	1
CES-RT4-400	004646612	250 - 400	CES140...CES400	2.500	1

Overload relay mounting kits for rails TH35

Type	Code No.	For use with	Weight [g]	Packaging [pcs]
CES-AD-RT0	004646613	CES-RT0	50	1
CES-AD-RT1	004646614	CES-RT1	50	1
CES-AD-RT2	004646615	CES-RT2	132	1
CES-AD-RT3	004646616	CES-RT3	164	1



CES-AD-RT

Motor contactor CEM

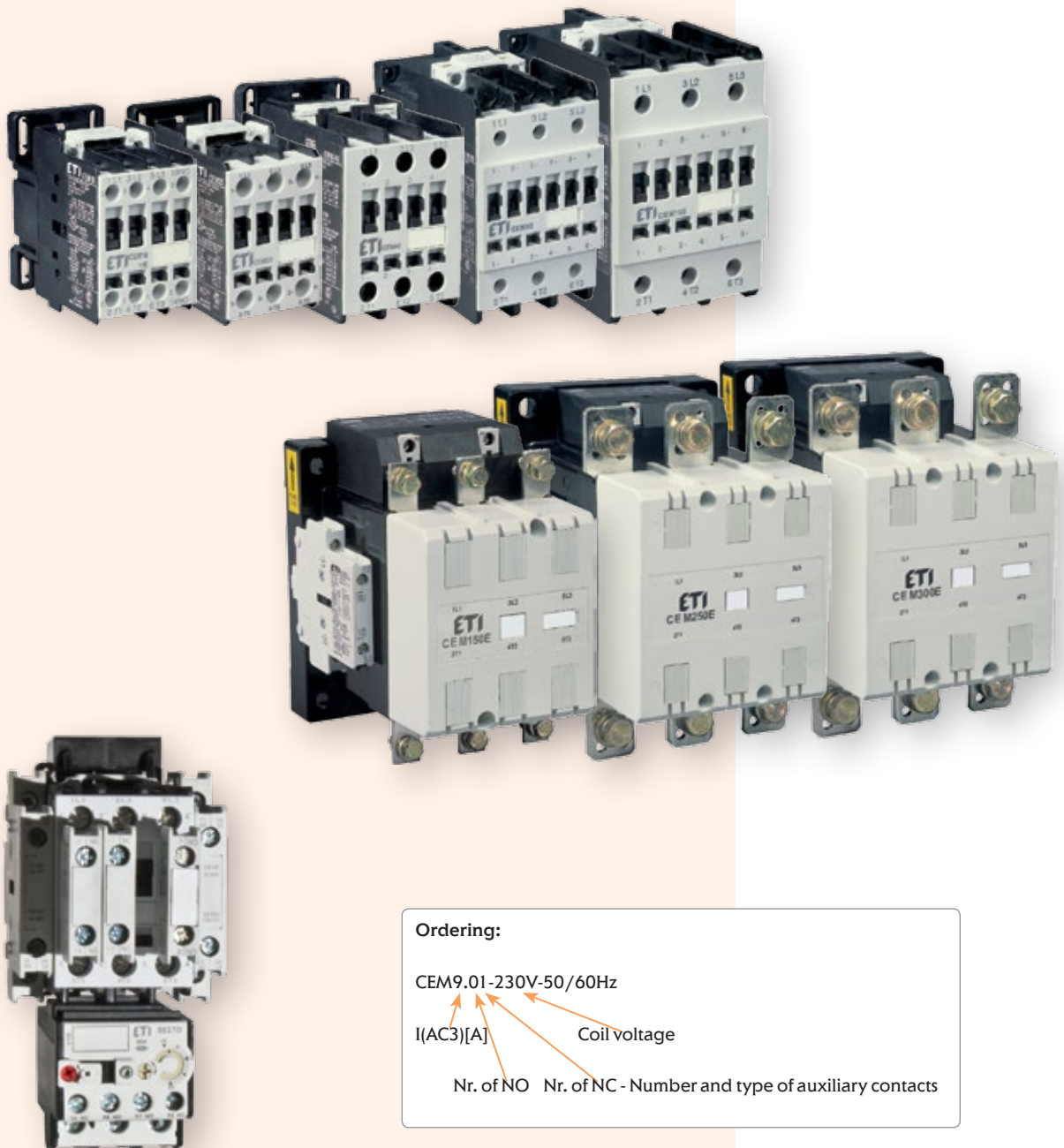
Application

Contactors are used to remotely control and protect (in combination with overload relays) electric motors and other electric loads with nominal power up to 160kW (at 400V AC3 duty).

Advantages

- Mounting on DIN rail and mounting plates
- High technical performance
- Low power loss (current heat loss)
- Protection against direct contact from front (IEC 536) IP20
- Wide range of accessories
- Surge suppressor (as option)
- Control voltage 24VAC, 48VAC, 110VAC, 230VAC, 400VAC

IE3 CONFORM



Ordering:

CEM9.01-230V-50/60Hz

I(AC3)[A] Coil voltage

Nr. of NO Nr. of NC - Number and type of auxiliary contacts

Advantages



→ Surge suppressors can be mounted as close as possible to source (coil).

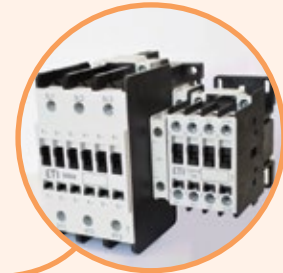


→ Lateral (side mounting) of auxiliary contacts.

→ The possibility of replacing the coil to other rated voltage. (AC coil compatible only with AC contactor. DC coil compatible only with DC contactor)



→ Front mounted auxiliary contacts



→ Mechanical interlock can lock two different size contactors



→ Special designed terminals provide reliable contact with cables.



→ Up to CEM105 possible to mount on DIN rail TH35 or directly on panel.



→ Overload relay (bimetal) can be mounted directly on contactor or on DIN rail TH35 by using an adapter

Motor contactor CEM9.10; 25A(AC1); 9A; 4kW(AC3)*				
Type	Code No.	Wiring diagram	Weight [g]	Packaging [pcs]
CEM9.10-24V-50/60Hz	004642120		295	1
CEM9.10-48V-50/60Hz	004642121		295	1
CEM9.10-110V-50/60Hz	004642122		295	1
CEM9.10-230V-50/60Hz	004642123		295	1
CEM9.10-400V-50/60Hz	004642124		295	1
CEM9.10-24V DC	004642220		510	1
CEM9.10-220V DC	004642221		510	1

* Auxiliary contact 1NO integrated

Motor contactor CEM9.01; 25A(AC1); 9A; 4kW(AC3)*				
Type	Code No.	Wiring diagram	Weight [g]	Packaging [pcs]
CEM9.01-24V-50/60Hz	004642110		295	1
CEM9.01-48V-50/60Hz	004642111		295	1
CEM9.01-110V-50/60Hz	004642112		295	1
CEM9.01-230V-50/60Hz	004642113		295	1
CEM9.01-400V-50/60Hz	004642114		295	1
CEM9.01-24V DC	004642210		510	1
CEM9.01-220V DC	004642211		510	1

* Auxiliary contact 1NC integrated

Motor contactor CEM12.10; 25A(AC1); 12A; 5.5kW(AC3)*				
Type	Code No.	Wiring diagram	Weight [g]	Packaging [pcs]
CEM12.10-24V-50/60Hz	004643120		295	1
CEM12.10-48V-50/60Hz	004643121		295	1
CEM12.10-110V-50/60Hz	004643122		295	1
CEM12.10-230V-50/60Hz	004643123		295	1
CEM12.10-400V-50/60Hz	004643124		295	1
CEM12.10-24V DC	004643220		510	1
CEM12.10-220V DC	004643221		510	1

* Auxiliary contact 1NO integrated

Motor contactor CEM12.01; 25A(AC1); 12A; 5.5kW(AC3)*				
Type	Code No.	Wiring diagram	Weight [g]	Packaging [pcs]
CEM12.01-24V-50/60Hz	004643110		295	1
CEM12.01-48V-50/60Hz	004643111		295	1
CEM12.01-110V-50/60Hz	004643112		295	1
CEM12.01-230V-50/60Hz	004643113		295	1
CEM12.01-400V-50/60Hz	004643114		295	1
CEM12.01-24V DC	004643210		510	1
CEM12.01-220V DC	004643211		510	1

* Auxiliary contact 1NC integrated



For auxiliary contact blocks, see page 230



Motor contactor CEM18.10; 32A(AC1); 18A; 7.5kW(AC3)*

Type	Code No.	Wiring diagram	Weight [g]	Packaging [pcs]
CEM18.10-24V-50/60Hz	004644120		295	1
CEM18.10-48V-50/60Hz	004644121		295	1
CEM18.10-110V-50/60Hz	004644122		295	1
CEM18.10-230V-50/60Hz	004644123		295	1
CEM18.10-400V-50/60Hz	004644124		295	1
CEM18.10-24V DC	004644220		510	1
CEM18.10-220V DC	004644221		510	1

* Auxiliary contact 1NO integrated

Motor contactor CEM18.01; 32A(AC1); 18A; 7.5kW(AC3)*

Type	Code No.	Wiring diagram	Weight [g]	Packaging [pcs]
CEM18.01-24V-50/60Hz	004644110		295	1
CEM18.01-48V-50/60Hz	004644111		295	1
CEM18.01-110V-50/60Hz	004644112		295	1
CEM18.01-230V-50/60Hz	004644113		295	1
CEM18.01-400V-50/60Hz	004644114		295	1
CEM18.01-24V DC	004644210		510	1
CEM18.01-220V DC	004644211		510	1

* Auxiliary contact 1NC integrated



For auxiliary contact blocks, see page 230



Motor contactor CEM25.00; 45A(AC1); 25A; 11kW(AC3)

Type	Code No.	Wiring diagram	Weight [g]	Packaging [pcs]
CEM25.00-24V-50/60Hz	004645100		295	1
CEM25.00-48V-50/60Hz	004645101		295	1
CEM25.00-110V-50/60Hz	004645102		295	1
CEM25.00-230V-50/60Hz	004645103		295	1
CEM25.00-400V-50/60Hz	004645104		295	1
CEM25.00-24V DC	004645200		510	1
CEM25.00-220V DC	004645201		510	1

For different configurations of auxiliary contacts up to 4 auxiliary contacts can be added to contactor and must be ordered separately.

Motor contactor CEM32.00; 60A(AC1); 32A; 15kW(AC3)

Type	Code No.	Wiring diagram	Weight [g]	Packaging [pcs]
CEM32.00-24V-50/60Hz	004646100		520	1
CEM32.00-48V-50/60Hz	004646101		520	1
CEM32.00-110V-50/60Hz	004646102		520	1
CEM32.00-230V-50/60Hz	004646103		520	1
CEM32.00-400V-50/60Hz	004646104		520	1
CEM32.00-24V DC	004646200		850	1
CEM32.00-220V DC	004646201		850	1

For different configurations of auxiliary contacts up to 4 auxiliary contacts can be added to contactor and must be ordered separately.

** 24V DC (24...28 V DC), 220V DC (208...240V DC)

Motor contactor CEM40.00; 60A(AC1); 40A; 18.5kW(AC3)

Type	Code No.	Wiring diagram	Weight [g]	Packaging [pcs]
CEM40.00-24V-50/60Hz	004647100		540	1
CEM40.00-48V-50/60Hz	004647101		540	1
CEM40.00-110V-50/60Hz	004647102		540	1
CEM40.00-230V-50/60Hz	004647103		540	1
CEM40.00-400V-50/60Hz	004647104		540	1
CEM40.00-24V DC	004647200		850	1
CEM40.00-220V DC	004647201		850	1

For different configurations of auxiliary contacts up to 4 auxiliary contacts can be added to contactor and must be ordered separately

** 24V DC (24...28V DC), 220V DC (208...240V DC).


Motor contactor CEM50.00; 80A(AC1); 50A; 22kW(AC3)

Type	Code No.	Wiring diagram	Weight [g]	Packaging [pcs]
CEM50.00-24V-50/60Hz	004648100		1105	1
CEM50.00-48V-50/60Hz	004648101		1105	1
CEM50.00-110V-50/60Hz	004648102		1105	1
CEM50.00-230V-50/60Hz	004648103		1105	1
CEM50.00-400V-50/60Hz	004648104		1105	1
CEM50.00-24V DC **	004648200		1240	1
CEM50.00-220V DC **	004648201		1240	1

For different configurations of auxiliary contacts up to 6 auxiliary contacts can be added to contactor and must be ordered separately.

** 24V DC (24...28V DC), 220V DC (208...240V DC)


Motor contactor CEM65.00; 110A(AC1); 65A; 30kW(AC3)

Type	Code No.	Wiring diagram	Weight [g]	Packaging [pcs]
CEM65.00-24V-50/60Hz	004649100		1120	1
CEM65.00-48V-50/60Hz	004649101		1120	1
CEM65.00-110V-50/60Hz	004649102		1120	1
CEM65.00-230V-50/60Hz	004649103		1120	1
CEM65.00-400V-50/60Hz	004649104		1120	1
CEM65.00-24V DC **	004649200		1240	1
CEM65.00-220V DC **	004649201		1240	1

For different configurations of auxiliary contacts up to 6 auxiliary contacts can be added to contactor and must be ordered separately.

** 24V DC (24...28V DC), 220V DC (208...240V DC)

For auxiliary contact blocks, see page 230


Motor contactor CEM80.00; 110A(AC1); 80A; 37kW(AC3)

Type	Code No.	Wiring diagram	Weight [g]	Packaging [pcs]
CEM80.00-24V-50/60Hz	004650100		1130	1
CEM80.00-48V-50/60Hz	004650101		1130	1
CEM80.00-110V-50/60Hz	004650102		1130	1
CEM80.00-230V-50/60Hz	004650103		1130	1
CEM80.00-400V-50/60Hz	004650104		1130	1
CEM80.00-24V DC **	004650200		1240	1
CEM80.00-220V DC **	004650201		1240	1

For different configurations of auxiliary contacts up to 6 auxiliary contacts can be added to contactor and must be ordered separately.

** 24V DC (24...28V DC), 220V DC (208...240V DC)

** Range of operating voltages is shown in technical part of catalogue

Motor contactor CEM95.00; 140A(AC1); 95A; 45kW(AC3)

Type	Code No.	Wiring diagram	Weight [g]	Packaging [pcs]
CEM95.00-24V-50/60Hz	004651100		1450	1
CEM95.00-48V-50/60Hz	004651101		1450	1
CEM95.00-110V-50/60Hz	004651102		1450	1
CEM95.00-230V-50/60Hz	004651103		1450	1
CEM95.00-400V-50/60Hz	004651104		1450	1
CEM95.00-24V DC **	004651200		1500	1
CEM95.00-220V DC **	004651201		1500	1

For different configurations of auxiliary contacts up to 6 auxiliary contacts can be added to contactor and must be ordered separately.

** 24V DC (24...28 V DC), 220V DC (208...240V DC)

Motor contactor CEM105.00; 140A(AC1); 105A; 55kW(AC3)

Type	Code No.	Wiring diagram	Weight [g]	Packaging [pcs]
CEM105.00-24V-50/60Hz	004652100		1470	1
CEM105.00-48V-50/60Hz	004652101		1470	1
CEM105.00-110V-50/60Hz	004652102		1470	1
CEM105.00-230V-50/60Hz	004652103		1470	1
CEM105.00-400V-50/60Hz	004652104		1470	1
CEM105.00-24V DC **	004652200		1500	1
CEM105.00-220V DC **	004652201		1500	1

For different configurations of auxiliary contacts up to 6 auxiliary contacts can be added to contactor and must be ordered separately.

** 24V DC (24...28 V DC), 220V DC (208...240V DC)

Motor contactor CEM112.22(E); 180A(AC1); 112A; 55kW(AC3)*

Type	Code No.	Wiring diagram	Weight [g]	Packaging [pcs]
CEM112.22-24V-50/60Hz	004653140		2400	1
CEM112.22-48V-50/60Hz	004653141			
CEM112.22-110V-50/60Hz	004653142			
CEM112.22-230V-50/60Hz	004653143			
CEM112.22-400V-50/60Hz	004653144			
CEM112E.22-28V AC/DC **	004646018			
CEM112E.22-130V AC/DC **	004646019			
CEM112E.22-250V AC/DC **	004646020			
CEM112E.22-415V AC/DC **	004646021			

* Integrated auxiliary contacts: two side mounted auxiliary contact blocks 2 X (1NO + 1 NC)

**28V AC/DC (24...28V), 130V AC/DC (110...130V), 250V AC/DC (208...250V), 415V AC/DC (360...415V)

Surge suppressor is already integrated

Motor contactor CEM150E.22; 225A(AC1); 150A; 75kW(AC3)*

Type	Code No.	Wiring diagram	Weight [g]	Packaging [pcs]
CEM150E.22-28V AC/DC **	004654240		2400	1
CEM150E.22-130V AC/DC **	004646023			
CEM150E.22-250V AC/DC **	004654241			
CEM150E.22-415V AC/DC **	004646025			

* Integrated auxiliary contacts: two side mounted auxiliary contact blocks 2 X (1NO + 1 NC)

**28V AC/DC (24...28V), 130V AC/DC (110...130V), 250V AC/DC (208...250V), 415V AC/DC (360...415V)

Surge suppressor is already integrated



For auxiliary contact blocks, see page 230



Motor contactor CEM180.22(E); 225A(AC1); 180A; 90kW(AC3)*				
Type	Code No.	Wiring diagram	Weight [g]	Packaging [pcs]
CEM180.22-24V-50/60Hz	004655140		3900	1
CEM180.22-48V-50/60Hz	004655141			
CEM180.22-110V-50/60Hz	004655142			
CEM180.22-230V-50/60Hz	004655143			
CEM180.22-400V-50/60Hz	004655144			
CEM180E.22-28V AC/DC **	004646029			
CEM180E.22-130V AC/DC **	004646026			
CEM180E.22-250V AC/DC **	004646027			
CEM180E.22-415V AC/DC **	004646028			

* Integrated auxiliary contacts: two side mounted auxiliary contact blocks 2 X (1NO + 1 NC)

**28V AC/DC (24...28V), 130V AC/DC (110...130V), 250V AC/DC (208...250V), 415V AC/DC (360...415V)

Surge suppressor is already integrated



Motor contactor CEM250.22(E); 350A(AC1); 250A; 132kW(AC3)*				
Type	Code No.	Wiring diagram	Weight [g]	Packaging [pcs]
CEM250.22-24V-50/60Hz	004656140		6000	1
CEM250.22-48V-50/60Hz	004656141			
CEM250.22-110V-50/60Hz	004656142			
CEM250.22-230V-50/60Hz	004656143			
CEM250.22-400V-50/60Hz	004656144			
CEM250E.22-28V AC/DC **	004646030			
CEM250E.22-130V AC/DC **	004646031			
CEM250E.22-250V AC/DC **	004646032			
CEM250E.22-415V AC/DC **	004646033			

* Integrated auxiliary contacts: two side mounted auxiliary contact blocks 2 X (1NO + 1 NC)

**28V AC/DC (24...28V), 130V AC/DC (110...130V), 250V AC/DC (208...250V), 415V AC/DC (360...415V)

Surge suppressor is already integrated

** Range of operating voltages is shown in the technical part of catalogue



For auxiliary contact blocks, see page 230

Motor contactor CEM300.22(E), 410A(AC1), 300A, 160kW(AC3)*				
Type	Code No.	Wiring diagram	Weight [g]	Packaging [pcs]
CEM300E.22-28V AC/DC	004656300		6900	1
CEM300E.22-50V AC/DC	004656301			
CEM300E.22-72V AC/DC	004656302			
CEM300E.22-130V AC/DC	004656303			
CEM300E.22-250V AC/DC	004656304			
CEM300E.22-415V AC/DC	004656305			

* Integrated auxiliary contacts: two side mounted auxiliary contact blocks 2 X (1NO + 1 NC)

**28V AC/DC (24...28V), 130V AC/DC (110...130V), 250V AC/DC (208...250V), 415V AC/DC (360...415V)

Surge suppressor is already integrated



Accessories



Auxiliary contact block - front mounted

Type	Code No.	Description	For use with	Wiring diagram	Weight [g]	Packaging [pcs]
BCXMF10	004641510	1 NO	CEM9-CEM105		15	1
BCXMF01	004641501	1 NC	CEM9-CEM105		15	1
BCXMF10	004642510	1 NO - early-make	CEM9-CEM105		15	1
BCXMF01	004643510	1 NC - late-break	CEM9-CEM105		15	1

not for CEM7,5CN and CEM10CN!

available free aux. contact blocks places:

CEM 9 CEM 40: 4 contact blocks

CEM 50 CEM 105: 6 contact blocks

CEM 112 CEM 300: mounting not available - only lateral, see below



Auxiliary contact block - lateral

Type	Code No.	Description	For use with	Wiring diagram	Weight [g]	Packaging [pcs]
BCXMLE11	004644511	1 NO - 1 NC (main)	CAEM4, CEM9-CEM250		15	1
BCXMLE20	004644520	2 NO (main)	CAEM4, CEM9-CEM250		15	1
BCXMRLE11	004645511	1 NO - 1 NC side mounted (upgraded)	CAEM4, CEM9-CEM250		15	1
BCXMRLE20	004645520	2 NO side mounted (upgraded)	CAEM4, CEM9-CEM250		15	1

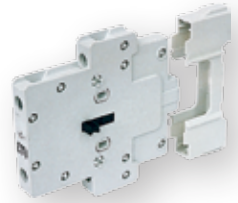
not for CEM7,5CN and CEM10CN!

Main" lateral auxiliary contact block can be mounted on the front side of the contactor, it can be upgraded max. with one additional auxiliary contact block.

Max. number of auxiliary contacts together (top and side mounted):
 max. 4: CEM9-CEM25, CAEM 4
 max. 6: CEM32-CEM40
 max. 8: CEM50-CEM105
 max. 8: CEM112-CEM300

Mechanical interlock

Type	Code No.	For use with	Weight [g]	Packaging [pcs]
BLIME 9-10S	004643601	CEM9-CEM10S	50	1
BLIME 112-300E	004643602	CEM112(E)-CEM300(E)	150	1


Surge suppressor

Type	Code No.	Coil voltage	For use with	Weight [g]	Packaging [pcs]
BAMRCE4	004642701	24-48 VAC	CEM9-CEM40	14	1
BAMRCE5	004642702	50-127 VAC	CEM9-CEM40	14	1
BAMRCE6	004642703	130-250 VAC	CEM9-CEM40	14	1
BAMRCE7	004642705	24-48 VAC	CEM50-CEM10S	14	1
BAMRCE8	004642706	50-127 VAC	CEM50-CEM10S	14	1
BAMRCE9	004642707	130-250 VAC	CEM50-CEM10S	14	1
BAMDIE10	004643701	12-600 VDC	CEM9-CEM10S	14	1
BAMRCE13	004642708	24-48 VAC	CEM112-CEM250	14	1
BAMRCE14	004642711	50-250 VAC	CEM112-CEM250	14	1

