

Overload relay



Overload relay RE27D

Type	Code No.	Current setting range [A]	For use with	Weight [g]	Packaging [pcs]
RE27D-0,4	004642400	0,28-0,4	CEM09 ... CEM25	147	1
RE27D-0,63	004642401	0,4-0,63			
RE27D-0,8	004642402	0,56-0,8			
RE27D-1,2	004642403	0,8-1,2			
RE27D-1,8	004642404	1,2-1,8			
RE27D-2,8	004642405	1,8-2,8			
RE27D-4,0	004642406	2,8-4,0			
RE27D-6,3	004642407	4-6,3			
RE27D-8,0	004642408	5,6-8			
RE27D-10	004642409	7-10			
RE27D-12,5	004642410	8-12,5			
RE27D-15	004642411	10-15			
RE27D-17	004642412	11-17			
RE27D-23	004642413	15-23			
RE27D-32	004642414	22-32			



Overload relay RE67.1D

Type	Code No.	Current setting range [A]	For use with	Weight [g]	Packaging [pcs]
RE67.1D-40	004643415	25-40	CEM32... CEM40	300	1
RE67.1D-50	004643416	32-50			



Overload relay RE67.2D

Type	Code No.	Current setting range [A]	For use with	Weight [g]	Packaging [pcs]
RE67.2D-57	004644417	40-57	CEM50 ... CEM80	310	1
RE67.2D-63	004644418	50-63			
RE67.2D-70	004644419	57-70			
RE67.2D-80	004644420	63-80			

Overload relay RE117.1D

Type	Code No.	Current setting range [A]	For use with	Weight [g]	Packaging [pcs]
RE117.1D-97	004645421	75-97	CEM95... CEM105	520	1
RE117.1D-112	004645422	90-112			

Overload relay RE117.2D

Type	Code No.	Current setting range [A]	For use with	Weight [g]	Packaging [pcs]
RE117.2D-97	004646421	75-97	CEM112(E)	550	1
RE117.2D-112	004646422	90-112			

Overload relay RE317.2D

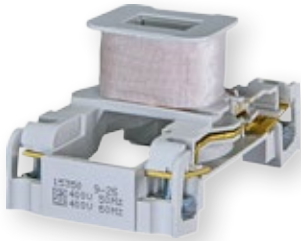
Type	Code No.	Current setting range [A]	For use with	Weight [g]	Packaging [pcs]
RE317D-150	004647423	100-150	CEM150(E)	900	1
RE317D-215	004647424	140-215	...		
RE317D-310	004647425	200-310	CEM250(E)		

Overload relay mounting kits for rails TH35

Type	Code No.	For use with	Weight [g]	Packaging [pcs]
BF27D	004641901	RE27D	50	1
BF67.1D	004641902	RE67.1,	95	1
BF67.2D	004641904	RE67.2	95	1
BF117D	004641903	RE117.1D	110	1



Individual coil for control voltage contactor



Individual coil for control voltage contactor					
Type	Code No.	AC/ DC coil	For use with	Weight [g]	Packaging [pcs]
BCAE4-25-24 V-50/60 Hz	004641810	AC	CEM9 - CEM25	65	1
BCAE4-25-48 V-50/60 Hz	004641811	AC			
BCAE4-25-110 V-50/60 Hz	004641812	AC			
BCAE4-25-230 V-50/60 Hz	004641813	AC			
BCAE4-25-400 V-50/60 Hz	004641814	AC			
BCCE-25-24 V DC	004642810	DC			
BCCE-25-48 V DC	004642811	DC			
BCCE-25-110 V DC	004642812	DC			
BCCE-25-220 V DC	004642813	DC			
BCAE-40-24 V-50/60 Hz	004641820	AC		CEM32 - CEM40	
BCAE-40-48 V-50/60 Hz	004641821	AC			
BCAE-40-110 V-50/60 Hz	004641822	AC			
BCAE-40-230 V-50/60 Hz	004641823	AC			
BCAE-40-400 V-50/60 Hz	004641824	AC			
BCCE-40-24 V DC	004642820	DC			
BCCE-40-48 V DC	004642821	DC			
BCCE-40-110 V DC	004642822	DC			
BCCE-40-220 V DC	004642823	DC			
BCAE-105-24 V-50/60 Hz	004641830	AC	CEM50 - CEM105		
BCAE-105-48 V-50/60 Hz	004641831	AC			
BCAE-105-110 V-50/60 Hz	004641832	AC			
BCAE-105-230 V-50/60 Hz	004641833	AC			
BCAE-105-400 V-50/60 Hz	004641834	AC			
BCCE-105-24 V DC	004642830	DC			
BCCE-105-48 V DC	004642831	DC			
BCCE-105-110 V DC	004642832	DC			
BCCE-105-220 V DC	004642833	DC			
BCAE-112-24 V-50/60 Hz	004641840	AC		CEM112	
BCAE-112-48 V-50/60 Hz	004641841	AC			
BCAE-112-110 V-50/60 Hz	004641842	AC			
BCAE-112-230 V-50/60 Hz	004641843	AC			
BCAE-180-24 V-50/60 Hz	004641850	AC	CEM180	400	
BCAE-180-48 V-50/60 Hz	004641851	AC			
BCAE-180-110 V-50/60 Hz	004641852	AC			
BCAE-180-230 V-50/60 Hz	004641853	AC			
BCAE-180-400 V-50/60 Hz	004641854	AC			
BCAE-250-24 V-50/60 Hz	004641860	AC	CEM250	675	
BCAE-250-48 V-50/60 Hz	004641861	AC			
BCAE-250-110 V-50/60 Hz	004641862	AC			
BCAE-250-230 V-50/60 Hz	004641863	AC			
BCAE-250-400 V-50/60 Hz	004641864	AC			

Note:
 - Only AC coils can be fitted to AC controlled contactors.
 - Only DC coils can be fitted to DC controlled contactors.

Individual coil for control voltage contactor

Type	Code No.	AC/CD coil	For use with	Weight [g]	Packaging [pcs]
BCEE-150E-28 V	004646044	AC/DC	CEM112E - CEM150E	235	1
BCEE-150E-130 V	004646045				
BCEE-150E-250 V	004646046				
BCEE-150E-415 V	004646047				
BCEE-180E-28 V	004646048		CEM180E	400	
BCEE-180E-130 V	004646049				
BCEE-180E-250 V	004646050				
BCEE-180E-415 V	004646051				
BCEE-300E-28 V	004646052		CEM250E - CEM300E	670	
BCEE-300E-130 V	004646053				
BCEE-300E-250 V	004646054				
BCEE-300E-415 V	004646055				


Electronic modules for BCEE coils

Type	Code No.	AC/CD coil	For use with	Weight [g]	Packaging [pcs]
MEE-300 28V-AC/DC	004646070	AC/DC	BCEE-150E-28 V, BCEE-180E-28 V, BCEE-300E-28 V	96	1
MEE-300 110V-AC/DC	004646072		BCEE-150E-130 V, BCEE-180E-130 V, BCEE-300E-130 V		
MEE-300 250V-AC/DC	004646073		BCEE-150E-250 V, BCEE-180E-250 V, BCEE-300E-250 V		
MEE-300 415V-AC/DC	004646074		BCEE-150E-415 V, BCEE-180E-415 V, BCEE-300E-415 V		

