

# Compact Load Break Switch CLBS

## Advantages of compact load break switches CLBS

**Description**

CLBS are manually operated and modular multipolar load break switches in range 16A-125A. They make and break under load conditions and provide safety isolation for any low voltage circuit, particularly for machine control circuits. Through the use of accessories, CLBS can be transformed into multipolar load break or 3/4 pole changeover switches. CLBS change over switches provide on load changeover switching between two sources or two low voltage power circuits, as well as their safety isolation. CLBS switches have been designed, qualified and tested according to the criteria defined by standard IEC 60947-3.

→ Three-pole version with the ability to connect:

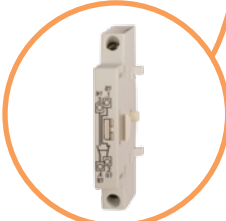
Protective earth module PE



Additional pole, 4th pole



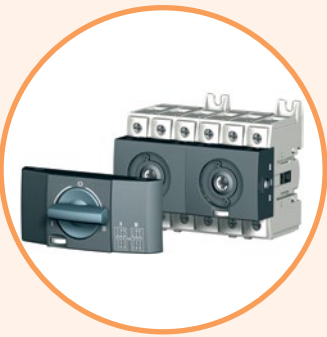
Auxiliary contact



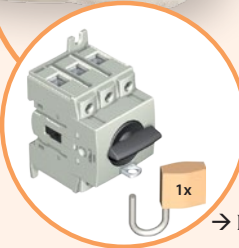
Neutral pole N



→ Front (direct and external) and right side operation



→ CLBS can be transformed into multipolar load break or 3/4 pole changeover switches



→ Padlocking the handle

**General characteristics**

- Double break per pole.
- Mounting options: DIN-rail, panel or modular panel with 45 mm front cut-out or directly on door(see door mounting kit).
- IP20 accessories.
- Severe utilisation categories (AC-22 and AC-23).
- Positive break indication.
- Contact point technology.

**Applications**

- Main incoming load break.
- Distribution load break.
- Machine control.
- Local safety load break.

**Advantages**

CLBS fully integrates isolation breaking and switching functions. Within a single product CLBS offers front and right side operation. Their highly functional design enables CLBS to be easily transformed from a load break switch to a changeover switch, offering a highly innovative modular solution for numerous applications. Its wide range of accessories means that the CLBS can be upgraded, even after it has been commissioned, enabling future requirements to be met.

The products' colour or shape may be different as on picture

## Compact Load Break Switch CLBS

### Compact Load Break Switch CLBS

#### CLBS body (no handle included) 3 POLES 16 - 125 A

Type	Code No.	I <sub>n</sub> [A]	Number of poles	Weight [g]	Packaging [pcs]
CLBS 16 3P	004661400	16	3	230	1/24
CLBS 25 3P	004661401	25	3	228	1/24
CLBS 40 3P	004661402	40	3	228	1/24
CLBS 63 3P	004661403	63	3	320	1/24
CLBS 80 3P	004661404	80	3	322	1/24
CLBS 100 3P	004661405	100	3	600	1/12
CLBS 125 3P	004661406	125	3	624	1/12

Front (direct and external) and right side operation



### Accessories

#### Direct handle for direct operation

Type	Description	Code No.	For use with	Weight [g]	Packaging [pcs]
CLBS-DH80/B	Direct handle, black	004661410	CLBS 16-80A 3P	10	1/200
CLBS-DH125/B	Direct handle, black	004661411	CLBS 100-125A 3P	8	1/200
CLBS-DH80/YR	Direct handle, red	004661412	CLBS 16-80A 3P	10	1/200

Type definition: Handle type / color initials



CLBS-DH80/B

CLBS-DH125/B

CLBS-DH80Y/R

#### Door interlocked front and right side handle IP65 (shaft not included)

Type	Description	Code No.	For use with	Weight [g]	Packaging [pcs]
CLBS-EH80/G	Door interlocked handle, grey front	004661415	CLBS 16-80A 3P	101	1/45
CLBS-EH125/G	Door interlocked handle, grey front	004661416	CLBS 100-125A 3P	103	1/45
CLBS-EH125/01G	Door interlocked handle, grey front	004661417	CLBS 16-125A 3P	190	1/25

Type definition: Handle type / color initials



CLBS-EH80/G

CLBS-EH125/G

CLBS-EH125/01G

#### Door interlocked front and right side handle IP65 (shaft not included).

Type	Description	Code No.	For use with	Weight [g]	Packaging [pcs]
CLBS-EH80/YR	Door interlocked handle, red front	004661418	CLBS 16-80A 3P	102	1/45
CLBS-EH125/YR	Door interlocked handle, red front	004661419	CLBS 100-125A 3P	104	1/45
CLBS-EH125/01YR	Door interlocked handle, red front	004661420	CLBS 16-125A 3P	200	1/25

Type definition: Handle type / color initials



CLBS-EH80/YR

CLBS-EH125/YR

CLBS-EH125/01YR

#### Shaft for door interlocked front and right side handle

Type	Description	Code No.	For use with	Weight [g]	Packaging [pcs]
CLBS-S200	Shaft, 200 mm	004661422	CLBS-EH80 CLBS-EH125	60	1/110
CLBS-S320	Shaft, 320 mm	004661423	CLBS-EH80 CLBS-EH125	80	1/90
CLBS-S400/01	Shaft, 400 mm	004661424	CLBS-EH125/01	125	1/25

For 3/4 pole switches, shaft extensions are for external front and side operation.  
Not for use with Change over kit and handles



CLBS-S

The products' colour or shape may be different as on picture

Technical data on page 424, 428

**Shafts for door interlocked front handle on change over switches**

Type	Description	Code No.	For use with	Weight [g]	Packaging [pcs]
CLBS-S200 CO 125	Shaft, 200mm	004661520	CLBS-EH80/G CO, CLBS-EH125/G CO	0,05	1/100
CLBS-S320 CO 125	Shaft, 320mm	004661521	CLBS-EH80/G CO, CLBS-EH125/G CO	0,09	1/240

For front operation only.



CLBS-GC EH125/01

**Guiding cone**

Type	Description	Code No.	For use with	Weight [g]	Packaging [pcs]
CLBS-GC EH80, 125	Guiding cone	004661421	CLBS-EH80 CLBS-EH125	130	1/240
LBS-GC (CLBS-EH125/01)	Guiding cone	004661489	CLB-EH125/01	29	1/25

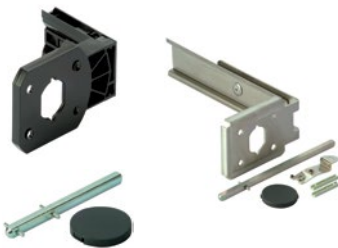
To guide the shaft extension into the external handle. This accessory enables handle to engage extension shaft with a misalignment of up to 15 mm. Required for shaft lengths over 320 mm.

**Door mounting kit (handle not included)**

Type	Description	Code No.	For use with	Weight [g]	Packaging [pcs]
CLBS-DMK80	Compact version	004661413	CLBS 25-80A 3P	60	1/50
CLBS-DMK125	Steel support	004661414	CLBS 100-125A 3P	120	1/20

This kit enables the direct mounting of the switch on the panel door, or on the left or right side of the panel. The connection clamps of the switch are always accessible. The external handle is quick and easy to install with the supplied locking nut mounted on the inside of the enclosure.

Not compatible with CLBS-EH125/01 handles



CLBS-DMK80

CLBS-DMK125

**Additional pole, 4th pole CLBS-4P**

Type	Description	Code No.	For use with	Weight [g]	Packaging [pcs]
CLBS-4P/16	Additional pole	004661432	CLBS 16A 3P	72	1/36
CLBS-4P/25	Additional pole	004661433	CLBS 25A3P	72	1/36
CLBS-4P/40	Additional pole	004661434	CLBS 40A 3P	72	1/36
CLBS-4P/63	Additional pole	004661435	CLBS 63A 3P	100	1/36
CLBS-4P/80	Additional pole	004661436	CLBS 80A 3P	102	1/36
CLBS-4P/100	Additional pole	004661437	CLBS 100 A 3P	200	1/16
CLBS-4P/125	Additional pole	004661438	CLBS 125 A 3P	205	1/16

Installation of 4th pole converts 3 pole CLBS to 4 pole load break switch or 3 pole CLBS changeover switch into a 4 pole changeover switch.

**Solid neutral pole CLBS-N**

Type	Description	Code No.	For use with	Weight [g]	Packaging [pcs]
CLBS-N/40	Solid neutral pole	004661443	CLBS 16-40A 3P	200	1/36
CLBS-N/80	Solid neutral pole	004661444	CLBS 63-80A 3P	200	1/36
CLBS-N/125	Solid neutral pole	004661445	CLBS 100-125A 3P	200	1/16

Neutral pole is fixed and can not be switched.

**Protective earth pole CLBS-PE**

Type	Description	Code No.	For use with	Weight [g]	Packaging [pcs]
CLBS-PE/40	Protective earth pole	004661446	CLBS 16-40A 3P	200	1/36
CLBS-PE/80	Protective earth pole	004661447	CLBS 63-80A 3P	200	1/36
CLBS-PE/125	Protective earth pole	004661448	CLBS 100-125A 3P	200	1/16

Protective earth pole is fixed and can not be switched.



CLBS-4P  
16..80



CLBS-4P  
100-125



CLBS-N  
100-125



CLBS-N  
16..80



CLBS-PE  
16..80



CLBS-PE  
100-125

## Compact Load Break Switch CLBS

### Auxiliary contact

Type	I [A]	Description	Code No.	For use with	Weight [g]	Packaging [pcs]
CLBS-PS11	10	Auxiliary contact NO+NC	004661425	CLBS 16-125A	44	1/52

Pre-break and signalisation of positions 0 and 1 by NO+NC. Auxiliary switch allows to anticipate switching of the main poles. It can be mounted on the left or on the right side of the device.



CLBS-PS11

### Change over kit (direct handle included) I-0-II

Type	Description	Code No.	For use with	Weight [g]	Packaging [pcs]
CLBS-CK80	Change over kit, black handle 1-0-2	004661439	2xCLBS 16-80A 3P	74	1/42
CLBS-CK125	Change over kit, black handle 1-0-2	004661440	2xCLBS 100-125A 3P	240	1/10

Two CLBS bodies must be ordered separately for one Change over kit



CLBS-CK80



CLBS-CK125

### Change over kit (direct handle included) I-I+II-II

Type	Description	Code No.	For use with	Weight [g]	Packaging [pcs]
CLBS-CKI+II80	Change over kit, black handle 1-1+2-2	004661522	2xCLBS 16-80A 3P	90	1/42
CLBS-CKI+II125	Change over kit, black handle 1-1+2-2	004661523	2xCLBS 100-125A 3P	240	1/10

Two CLBS bodies must be ordered separately for one Change over kit

### Door interlocked front handle IP65 (shaft not included) for change over switch - External front operation

Type	Description	Code No.	For use with	Weight [g]	Packaging [pcs]
CLBS-EH80/G CO	Door interlocked front handle, grey front 1-0-2	004661441	CLBS-CK80	101	1/45
CLBS-EH125/G CO	Door interlocked front handle, grey front 1-0-2	004661442	CLBS-CK125	101	1/45

Type definition: Handle type / color initials



CLBS-EH80/G CO



CLBS-EH125/G CO

### Applications

Top and bottom protection against direct contact with the terminals or connection parts. An opening on each terminal cover makes it possible to insert a temperature measurement probe.

### Terminal shrouds (covers)

Type	Description	Code No.	For use with	Weight [g]	Packaging [pcs]
CLBS-TS40 3P	Terminal shroud 3P 16-40A	004661426	CLBS 16-40A	20	1/110
CLBS-TS80 3P	Terminal shroud 3P 63-80A	004661427	CLBS 63-80A	20	1/125
CLBS-TS125 3P	Terminal shroud 3P 100-125A	004661428	CLBS 100-125A	63	1/22
CLBS-TS40 1P	Terminal shroud 1P 16-40A	004661429	CLBS 16-40A	8	1/200
CLBS-TS80 1P	Terminal shroud 1P 63-80A	004661430	CLBS 63-80A	6	1/200
CLBS-TS125 1P	Terminal shroud 1P 100-125A	004661431	CLBS 100-125A	22	1/120

One reference code includes 2 pcs 1 for top and 1 for bottom contacts.



CLBS-TS40 3P



CLBS-TS40 1P

The products' colour or shape may be different as on picture